

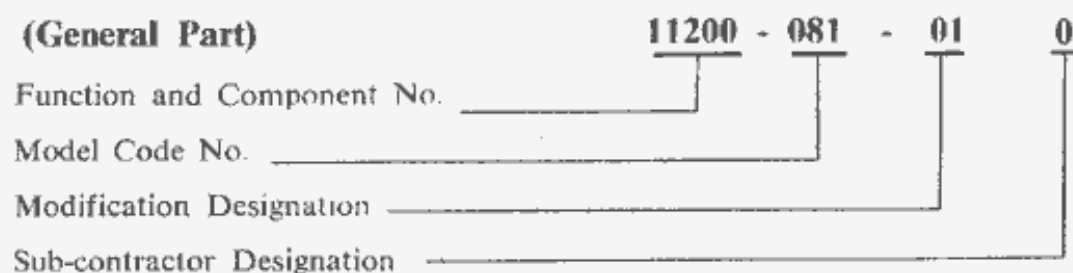
**HONDA**  
**GENUINE PARTS**



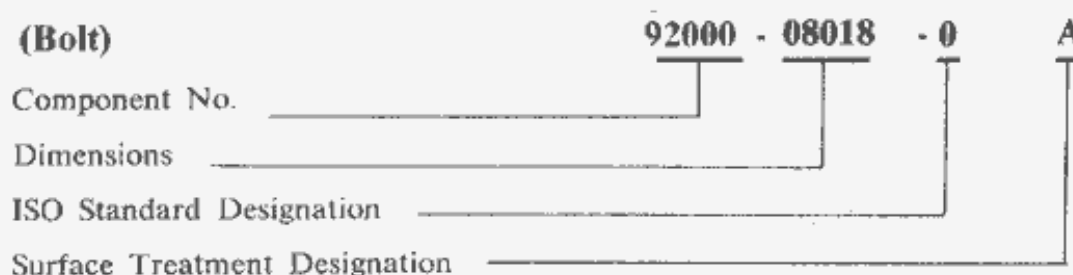
# HOW TO USE THIS PARTS LIST

1. This Parts List is applied to the Honda 50 Model PF50 only.
2. In each component block parts are arranged according to the disassembly procedure except for standard parts as bolts, nuts which are found at the bottom of the page. Therefore, this list can also be utilized as a manual for servicing as well as for placement of orders for spare parts.
3. Composition of Parts Numbers is as follows :

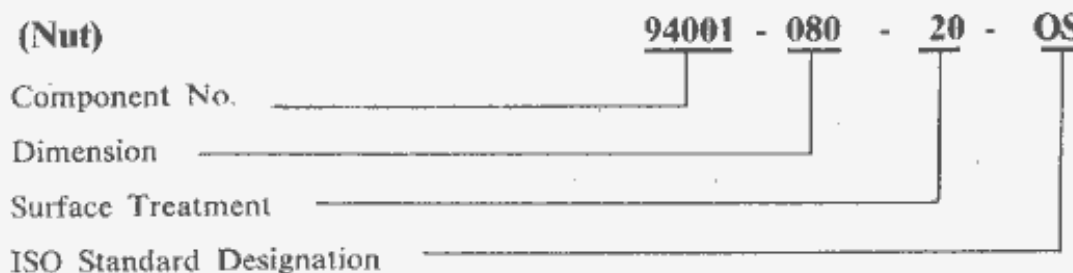
## (General Part)



## (Bolt)



## (Nut)



4. Announcement on the respective engine parts modifications will be made with Parts News and/or Revision Sheets.
5. The figure under the heading « No. Used » indicates the number of pieces used in the respective component block.
6. Engine serial numbers are indicated as follows.

**PF50E**

**Model**

**C**

**Numbering Code**

**E**

**Area Code**

**00001**

**Engine Serial Number**

Numbering Code : When engine serial number is exceeded up to engine serial number 99999, it is changed from numbering code C to D.

Area Code :	Used for England (GB)	Used for Germany (D)
	Used for France (F)	Used for Danmark (DK)
	Used for Belgium (B)	Used for Finland (SF)
	Used for Netherland (NL)	

Engine Serial Number : Engine Serial Numbers are indicated to production units and controlled by engine serial numbers for marketing areas.

\* Further, area codes are omitted from this Parts List.

7. Engine serial number is located on the left crankcase below the crank pedal.
8. Dimensions are indicated in millimeters except for steel balls which are indicated in inches.
9. When modifications are made to a part, the reference number will change as 1-1, 1-2 etc. for the modified part with applicable serial numbers entered for each of it.
10. Placement of orders are requested to be made with our Parts Division under the Part Numbers, not by part descriptions.
11. This Parts List was compiled as on June, 3, 1970.
12. Not available separately =  
Niet afzonderlijk verkrijgbaar - Non livrable séparément - Nicht separat lieferbar.

**HONDA MOTOR N.V.**

# ISO THREADED PARTS

— Not interchangeable with the previous threaded parts —

Threaded parts used in this model conform to the Thread Standard of ISO (International Standardization Organization), and are different from those used in the earlier models.

For servicing this model, therefore, tool set for the earlier models is not sufficient. Socket or box wrenches for 5.5 mm, 7 mm, 12 mm, 22 mm, 24 mm and 27 mm in width across the flats will become necessary.

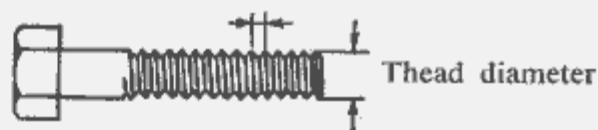
ISO threads with 3 mm, 4 mm, 5 mm and 12 mm thread diameters are different in pitches from the earlier threads, therefore, confused use of threaded parts will result in damages to threads.

Change in pitch

Thread Diameter	Earlier Pitch	ISO Pitch
3 mm	0.6	0.5
4 mm	0.75	0.7
5 mm	0.9	0.8
12 mm	1.5	1.25

Width across flat

Pitch



## How to identify ISO threaded parts

For easy identification, the following markings are made on the new ISO threaded parts.

Hex. bolts



Presence of figure on the bolt head

Cross screws



Semi-spherical embossement on the head

Nuts



Semi-spherical dimple

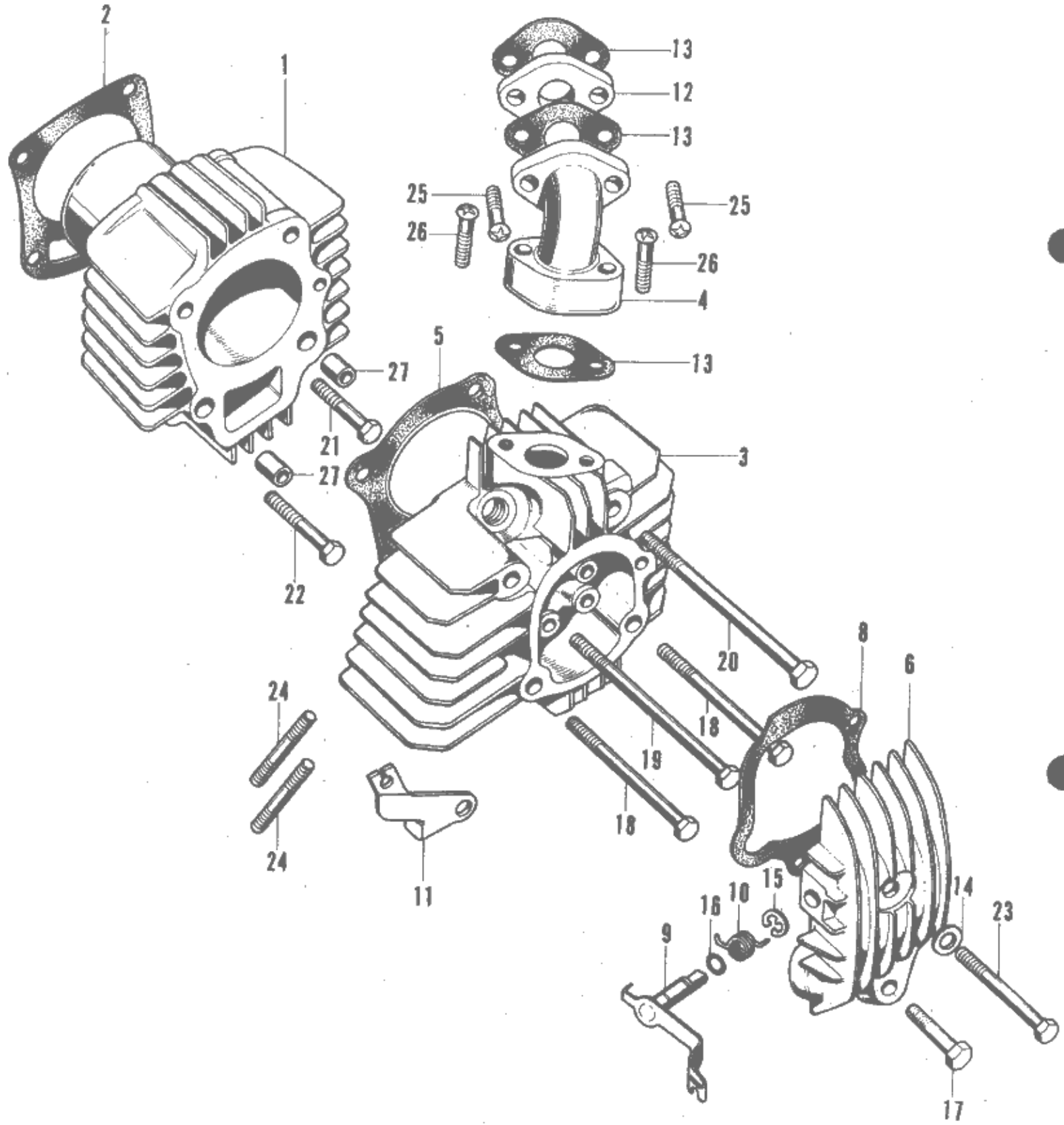
They can also be identified by the part numbers.

**92000 - 08012 - OA**

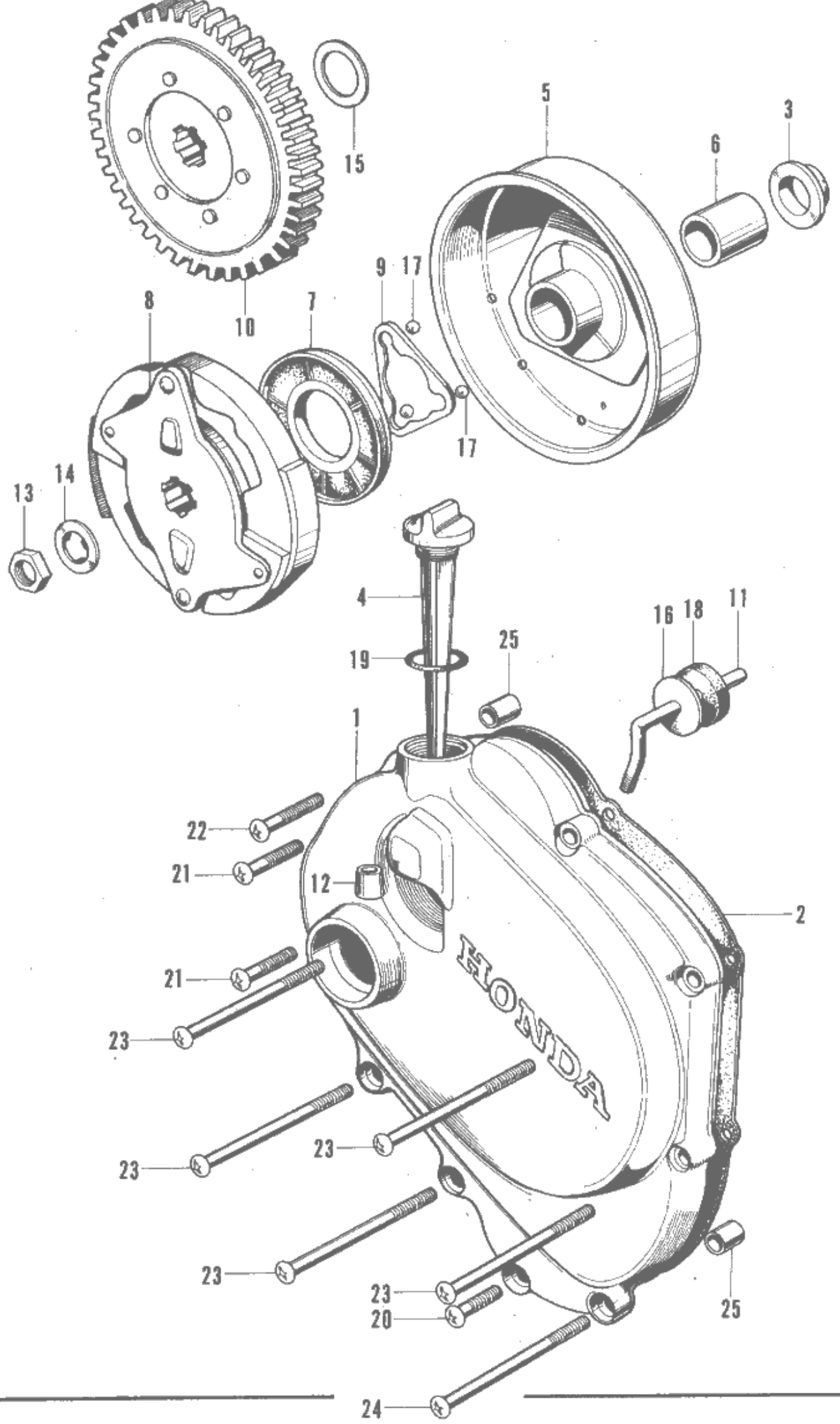
Those parts with this marking at the end of the part numbers are of ISO threads.

For further details, please refer to Service Bulletin No. 004 dated April 20, 1967.



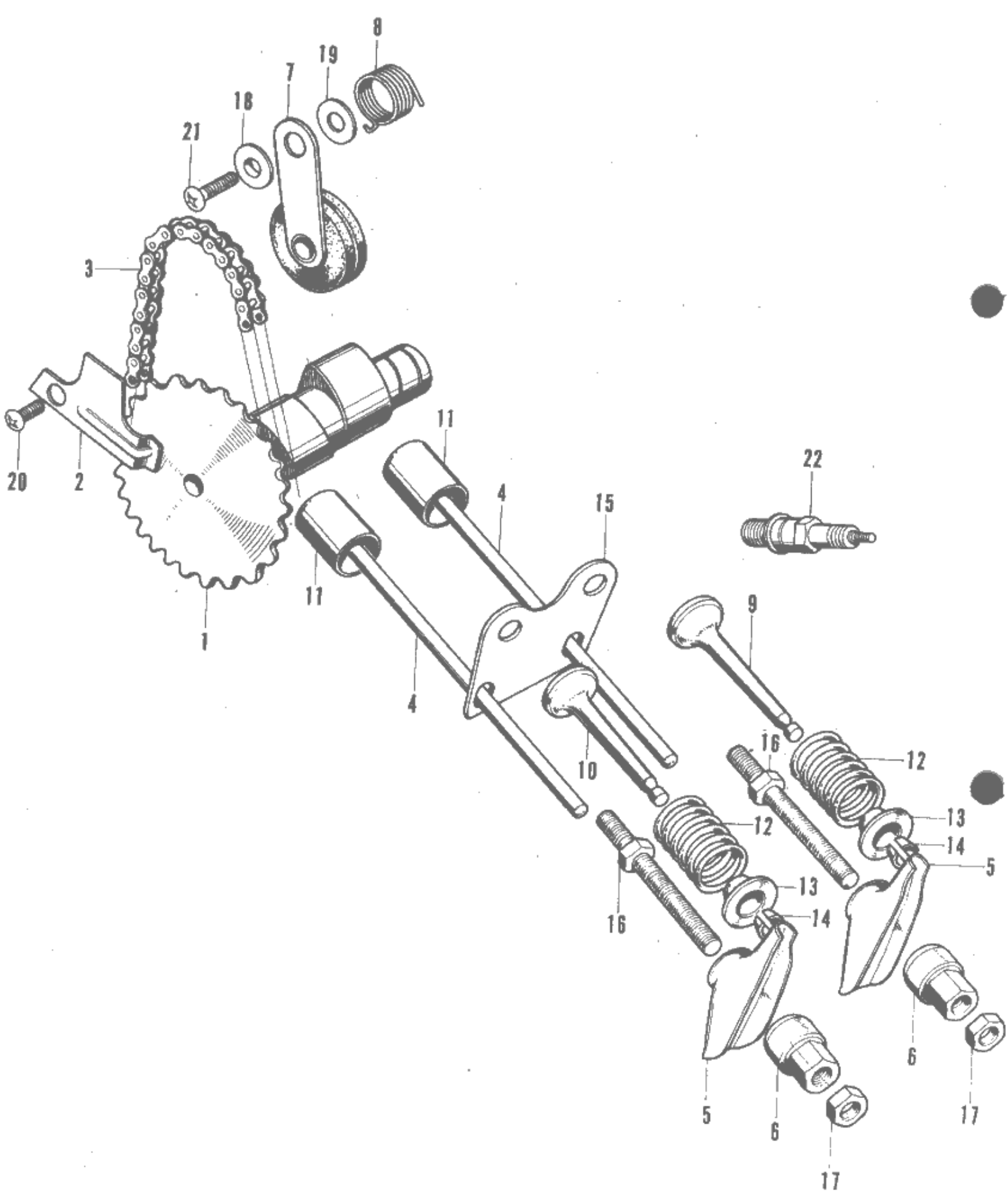


Ref. No.	Part No.	Description	Qty	Remarks
1	12100—081—010	CYLINDER .....	1	
2	12191—081—000	GASKET, cylinder .....	1	
3	12200—081—000	HEAD, cylinder .....	1	C0001—C07226
	12200—081—010	HEAD, cylinder .....	1	C07226
4	12210—081—000	PIPE COMP., inlet .....	1	
5	12251—081—000	GASKET, cylinder head .....	1	
6	12301—081—000	COVER, cylinder head .....	1	C00001—C07101
	12301—081—040	COVER, cylinder head .....	1	C07101—C07226
	12301—081—050	COVER, cylinder head .....	1	C07226
8	12391—081—000	GASKET, cylinder cover head .....	1	C00001—C07226
	12391—081—010	GASKET, cylinder cover head .....	1	C07226
9	14920—081—020	SHAFT COMP., decomp. ....	1	
10	14935—081—010	SPRING, decomp. return .....	1	
11	14945—081—010	BRACKET, decomp. ....	1	
12	16265—081—000	INSULATOR, carburettor .....	1	
13	16267—081—000	GASKET, inlet pipe .....	3	
14	90478—700—000	WASHER A, 6 mm .....	1	
15	90607—081—000	CIR-CLIP, 7 mm .....	1	
16	91301—216—000	O-RING, 5.5 x 1.5 .....	1	
17	92000—06020	BOLT, hex., 6 x 20 .....	1	
18	92000—06071	BOLT, hex., 6 x 71 .....	2	
19	92000—06100	BOLT, hex., 6 x 100 .....	1	
20	92000—06112	BOLT, hex., 6 x 112 .....	1	
21	92100—06028	BOLT, hex., 6 x 28 .....	1	
22	92100—06032	BOLT, hex., 6 x 32 .....	1	
23	92100—06056	BOLT, hex., 6 x 58 .....	1	
24	92700—06030	BOLT, stud, 6 x 30 .....	1	
25	93500—06020	SCREW, pan, 6 x 20 .....	2	
26	93500—06025	SCREW, pan, 6 x 25 .....	2	
27	94301—08120	PIN, knock, 8 x 12 .....	2	

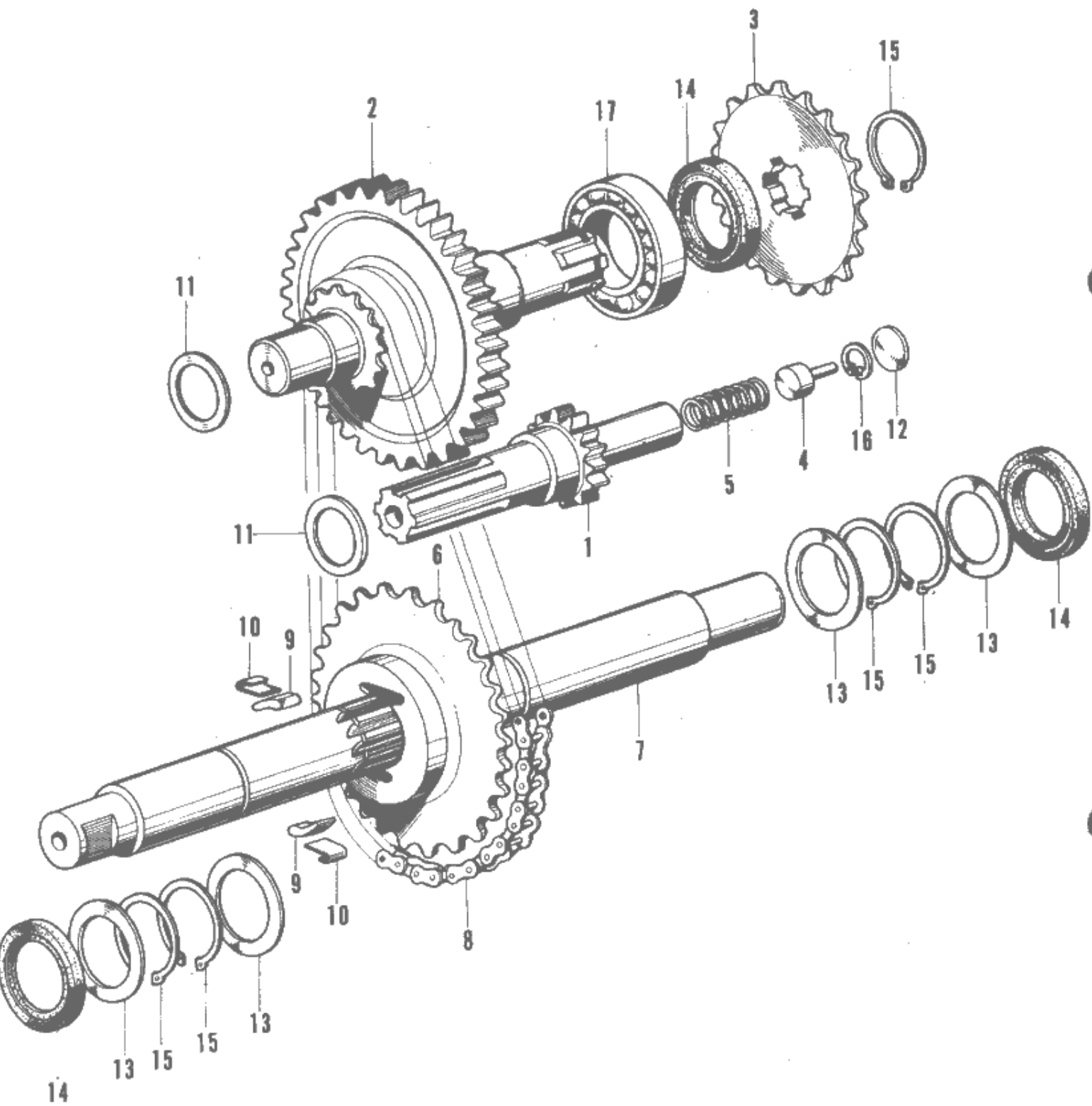




Ref. No.	Part No.	Description	Qty	Remarks
1	11331—081—000	COVER, R. crank case .....	1	
2	11394—081—010	GASKET, R. crank case cover .....	1	
3	14315—081—000	COLLAR, timing sprocket distance.....	1	
4	15650—040—000	OIL, gauge .....	1	
5	22100—081—000	OUTER COMB., clutch (18T) .....	1	
6	22131—081—000	GUIDE, clutch center .....	1	
7	22201—044—050	PLATE, clutch friction .....	1	
8	22300—081—000	PLATE ASSY., drive .....	1	
9	22802—044—000	RETAINER, ball .....	1	
10	23110—081—020	GEAR COMP., primary driven (54T) .....	1	
11	24611—081—010	SLIDER, main shaft .....	1	
12	24612—063—000	CAP, free pawl slider .....	1	
13	90231—816—000	NUT, lock, 14 mm .....	1	
14	90434—816—000	WASHER, lock, 14 mm .....	1	
15	90451—081—000	WASHER A, thrust, 17 mm .....	1	
16	90456—081—000	WASHER, 5 x 30 .....	1	
17	90921—044—000	BALL, clutch .....	3	
18	91212—063—005	OIL-SEAL, 5 x 30 x 6 .....	1	
19	91311—044—000	O-RING, 18.2 $\varnothing$ .....	1	
20	93500—06020	SCREW, pan, 6 x 20 .....	1	
21	93500—06025	SCREW, pan, 6 x 25 .....	2	
22	93500—06032	SCREW, pan, 6 x 32 .....	1	
23	93500—06075	SCREW, pan, 6 x 75 .....	5	
24	93500—06085	SCREW, pan, 6 x 85 .....	1	
25	94301—08120	PIN, knock, 8 x 12 .....	2	

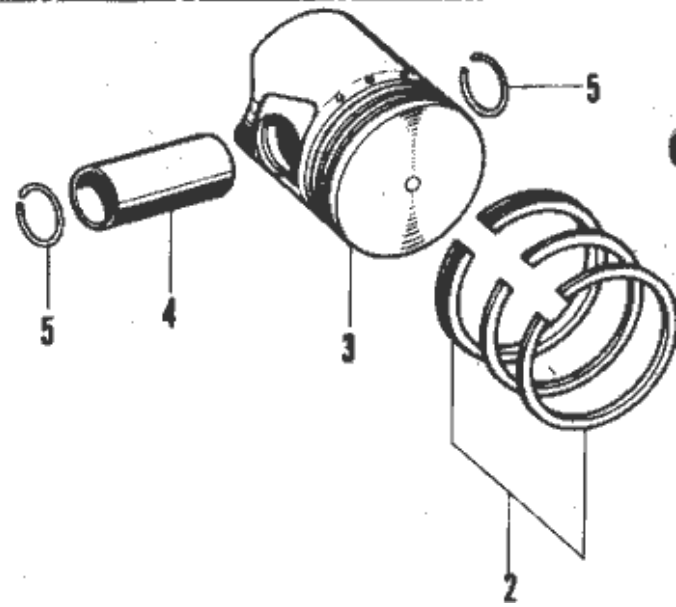
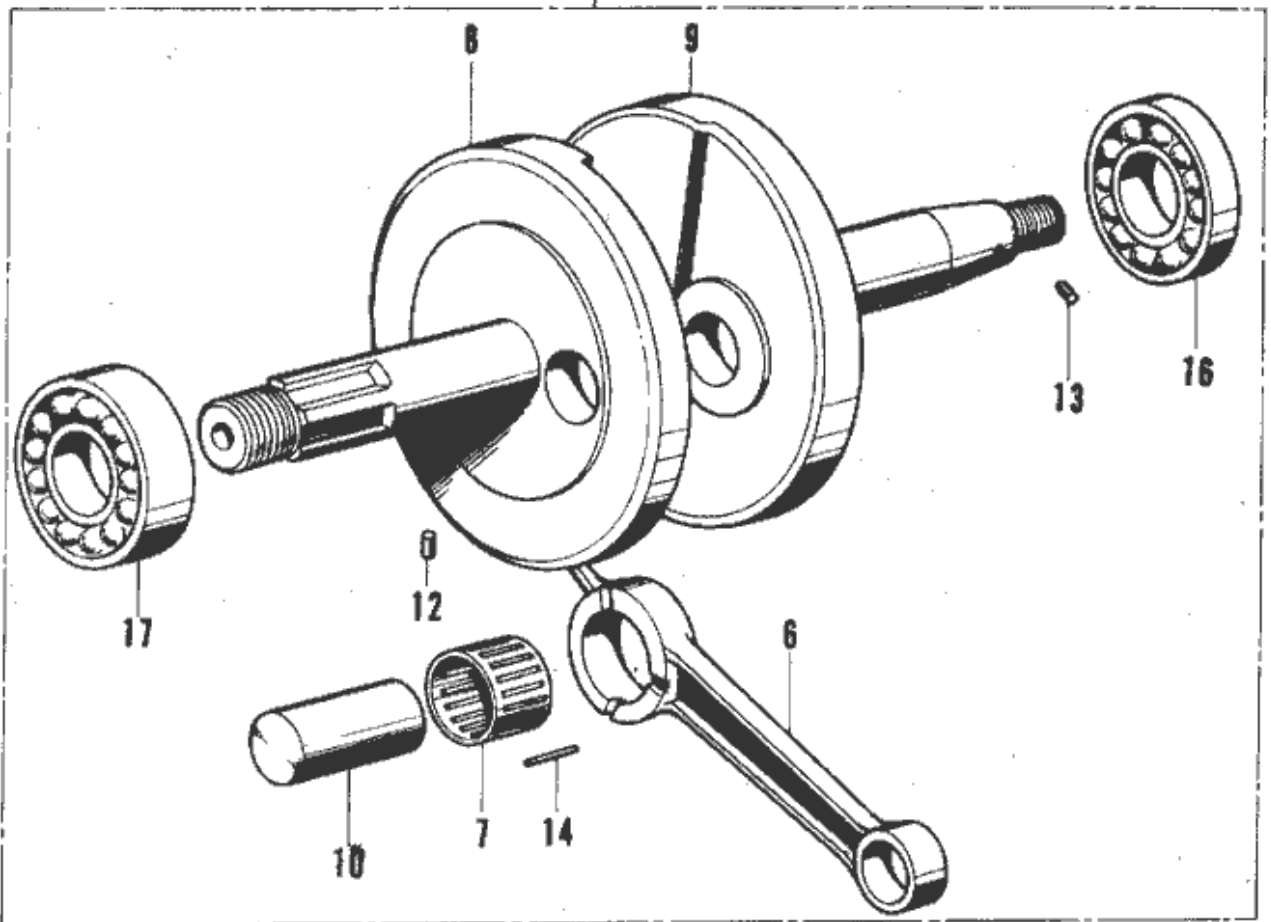


Ref. No.	Part No.	Description	Qty	Remarks
1	14101—081—010	SHAFT, cam (30T) .....	1	
2	14105—081—010	PLATE, cam shaft set .....	1	
3	14401—081—000	CHAIN, cam (42 LINKS) .....	1	
4	14411—081—000	ROD, push .....	2	
5	14431—081—000	ARM, valve rocker .....	2	
6	14451—081—000	PIVOT, rocker arm .....	2	
7	14500—081—000	TENSIONER COMP., cam chain .....	1	
8	14541—081—000	SPRING, tensioner .....	1	
9	14711—081—000	VALVE, inlet .....	1	C00001—CE08351
	14711—081—010	VALVE, inlet .....	1	CE08351
10	14721—081—000	VALVE, exhaust .....	1	C00001—CE08351
	14721—081—010	VALVE, exhaust .....	1	CE08351
11	14731—081—000	LIFTER, valve .....	2	
12	14751—081—000	SPRING, valve .....	2	
13	14771—081—000	RETAINER, valve spring .....	2	C00001—CE08351
	14771—081—010	RETAINER, valve spring .....	2	CE08351
14	14781—081—000	COTTER, valve .....	2	C00001 - CE08351
	14781—001—010	COTTER, valve .....	4	CE08351
15	14791—081—000	PLATE, push rod guide .....	1	
16	90012—081—010	BOLT, pivot .....	2	
17	90206—023—000	NUT, pivot adjuster .....	2	
18	90445—081—000	WASHER, 6 mm .....	1	
19	90511—216—670	WASHER, 6 x 17 .....	1	
20	93500—06012	SCREW, pan, 6 x 12 .....	1	
21	93500—06016	SCREW, pan, 6 x 16 .....	1	
22	98056—57710	PLUG, sparking .....	1	

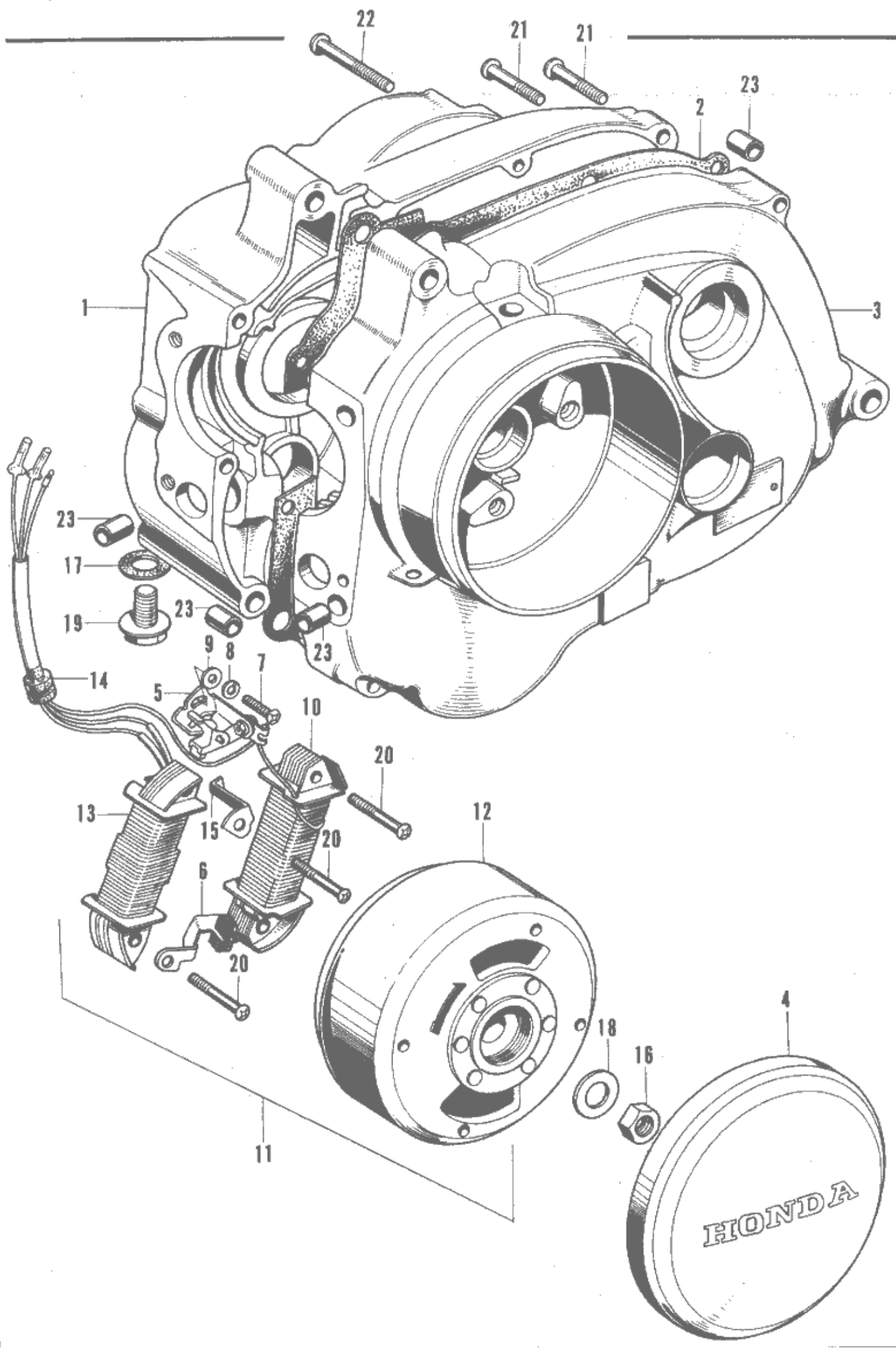


Ref. No.	Part No.	Description	Qty	Remarks
1	23211—081—000	SHAFT, main, transmission .....	1	
2	23220—081—010	SHAFT, counter, transmission .....	1	
3	23801—081—000	SPROCKET, drive (15T) .....	1	
4	24111—081—000	PIECE, push .....	1	
5	24621—081—000	SPRING, free pawl .....	1	
6	28802—081—000	SPROCKET, starter drive .....	1	C00001—C08851
	28802—081—020	SPROCKET, starter drive (29T) .....	1	C08851
7	28811—081—000	SHAFT, pedal .....	1	
8	28813—081—000	CHAIN, pedal shaft (36 LINKS) .....	1	
9	28815—081—000	PAWL, ratchet .....	2	C00001—C05501
	28815—081—010	PAWL, ratchet .....	2	C05501
10	28817—081—000	SPRING, set, ratchet pawl .....	2	C00001—C08851
	28817—081—030	SPRING, set, ratchet pawl .....	2	C08851
11	90451—081—000	WASHER A, thrust, 17 mm .....	2	
12	90461—081—000	WASHER, 15 mm .....	1	
13	90469—081—000	WASHER, 20 mm .....	4	C00001—C08851
	90469—081—010	WASHER, 20 mm .....	4	C08851
14	91203—081—005	OIL-SEAL, 20 x 30 x 6 .....	3	
15	94510—20000	CIR-CLIP, ex., 20 mm .....	5	
16	94520—10000	CIR-CLIP, in., 10 mm .....	1	
17	96100—60040	BEARING, ball, 6004 .....	1	

1

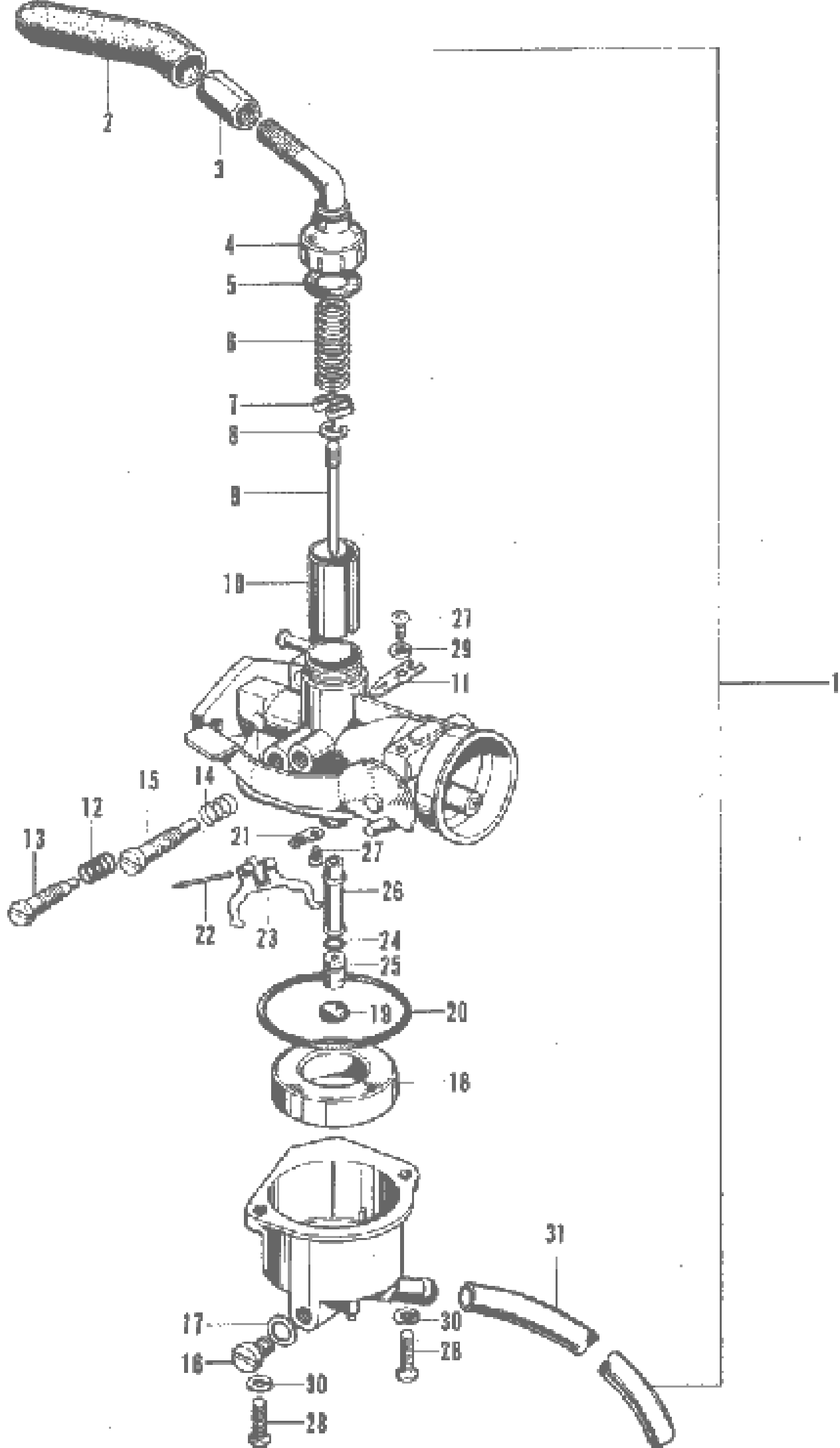


Ref. No.	Part No.	Description	Qty	Remarks
1	13000—081—010	SHAFT COMP., crank .....	1	
2	13010—044—000	RING SET, piston (S. T. D.) .....	1	
	13020—044—000	RING SET, piston (0.25) .....	1	
	13030—044—000	RING SET, piston (0.50) .....	1	
	13040—044—000	RING SET, piston (0.75) .....	1	
	13050—044—000	RING SET, piston (1.00) .....	1	
3	13101—081—000	PISTON (S. T. D.) .....	1	
	13102—081—000	PISTON (0.25) .....	1	
	13103—081—000	PISTON (0.50) .....	1	
	13104—081—000	PISTON (0.75) .....	1	
	13105—081—000	PISTON (1.00) .....	1	
4	13111—044—010	PIN, piston .....	1	
5	13115—001—000	CLIP, piston pin .....	2	
6	13201—063—300	ROD, connecting .....	1	
7	13211—044—030	RETAINER, roller .....	1	
8	13311—081—310	SHAFT, R. crank .....	1	
9	13321—063—310	SHAFT, L. crank .....	1	
10	13381—063—300	PIN, crank .....	1	
11	14311—081—010	SPROCKET, timing (15T) .....	1	
12	90719—081—000	PIN, timing .....	1	
13	90741—044—000	PIN, knock, 3 x 4 .....	1	
14	91101—205—010	ROLLER, rod, 2.5 x 8.5 .....	20	
15	91211—044—000	OIL-SEAL, 15 x 25 x 6 .....	1	
16	96100—62020	BEARING, ball, 6202 .....	1	
17	96100—62030	BEARING, ball, 6203 .....	1	



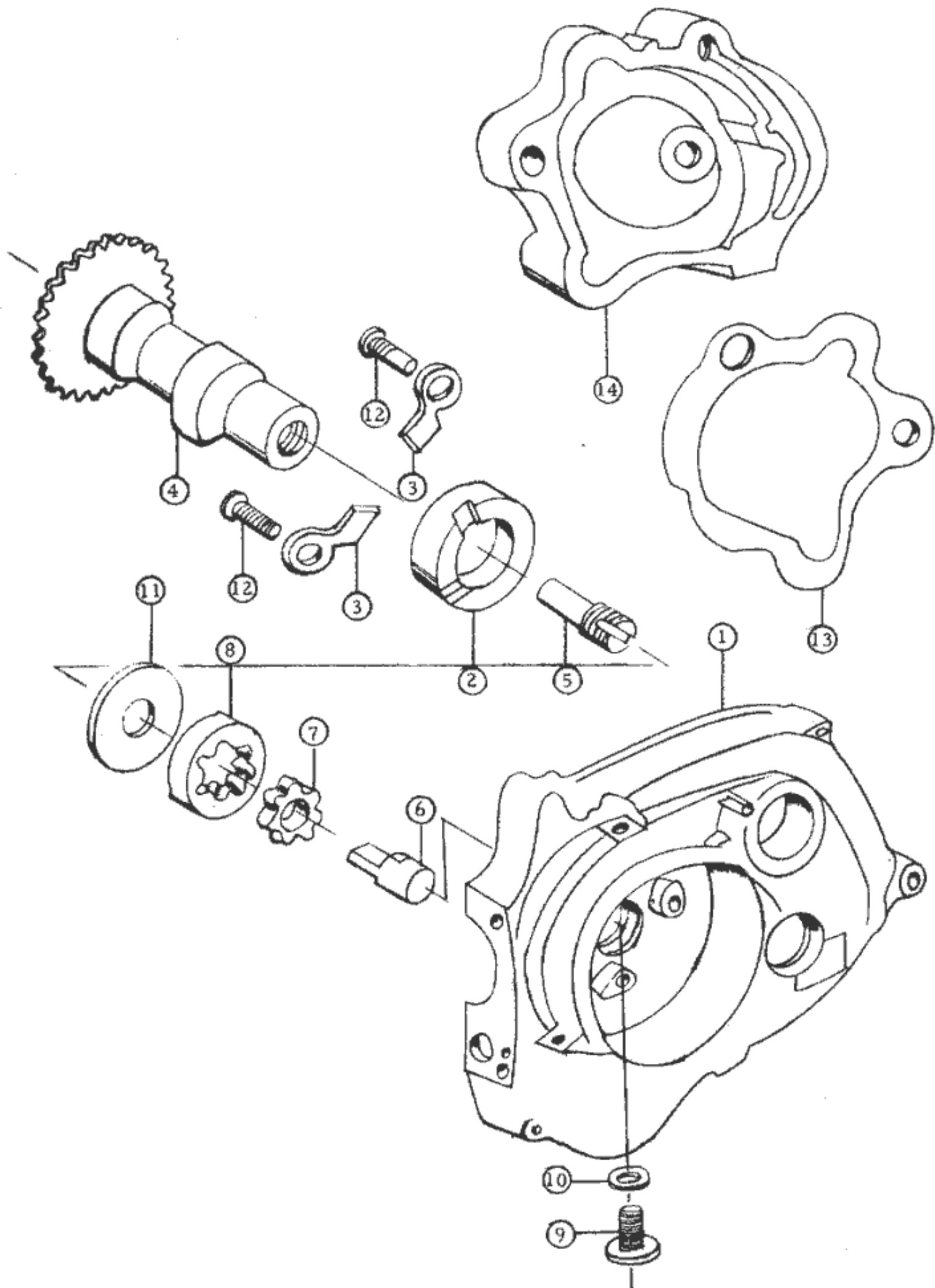


Ref. No.	Part No.	Description	Qty	Remarks
1	11100—081—010	CASE COMP., right crank .....	1	
2	11191—081—000	GASKET, crank case .....	1	
3	11200—081—010	CASE COMP., left crank .....	1	
4	11431—063—000	COVER, dynamo .....	1	
5	30202—063—004	BREAKER, contact (NIPPON DENSO) .....	1	
6	30205—044—004	FELT COMP., oil (NIPPON DENSO) .....	1	
7	30207—063—004	SCREW, breaker set (NIPPON DENSO) .....	1	
8	30208—063—004	WASHER, spring (NIPPON DENSO) .....	1	
9	30209—063—004	WASHER, plain (NIPPON DENSO) .....	1	
10	30541—063—004	COIL COMP., primery (NIPPON DENSO) .	1	
11	31100—081—601	A. C. GENERATOR ASS., flywheel .....	1	GB (15/15W)— CE08351
		(NIPPON DENSO)		
	31100—099—620	A.C. GENERATOR, Assy., Flywheel .....	1	F—CF10061
	31100—099—690	A.C. GENERATOR, Assy., Flywheel .....	1	NL
	31100—063—621	A.C. GENERATOR, Assy., Flywheel .....	1	B
12	31121—081—601	FLYWHEEL COMP. (NIPPON DENSO) .....	1	GB (15/15W)— CE08351
	31121—099—620	FLYWHEEL COMP. ....	1	F—CF10061
	31121—099—690	FLYWHEEL COMP. ....	1	NL
	31121—063—621	FLYWHEEL COMP. ....	1	B
13	31631—081—601	COIL COMP., lamp (NIPPON DENSO) .....	1	GB (15/15W)— CE08351
	31631—063—621	COIL COMP., lamp .....	1	F & B
	31631—081—601	COIL COMP., lamp .....	1	
14	32956—063—300	GROMMET, dynamo cord .....	1	
15	32957—063—010	CLAMPER, dynamo cord .....	1	
16	90201—044—000	NUT, 10 mm .....	1	
17	90407—259—000	PACKING, drain cock .....	1	
18	90426—001—000	WASHER, magneto fixing .....	1	
19	92800—12000	BOLT, drain plug, 12 mm .....	1	
20	93500—04022—0A	SCREW, pan, 4 x 22 .....	4	
21	93500—06036	SCREW, pan, 6 x 36 .....	3	
22	93500—06045	SCREW, pan, 6 x 45 .....	1	
23	94301—08120	PIN, knock, 8 x 12 .....	4	

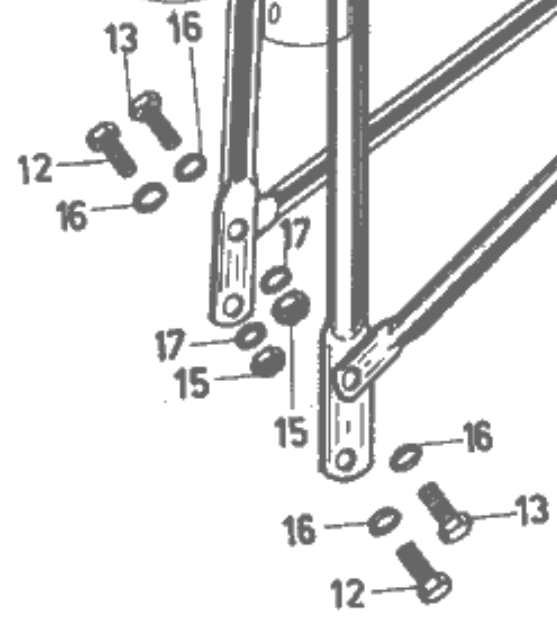
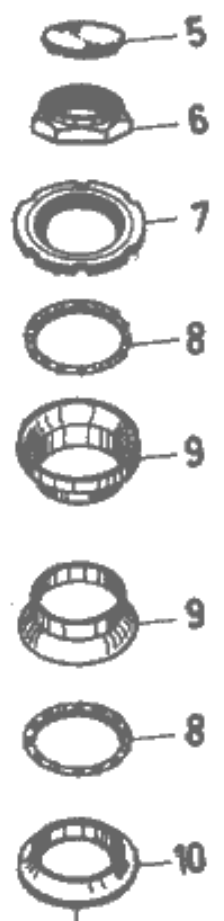
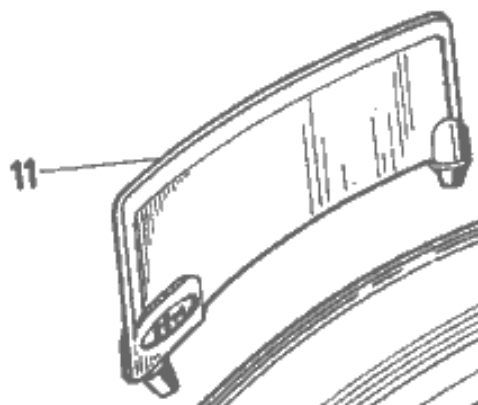
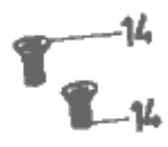
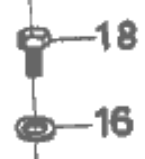
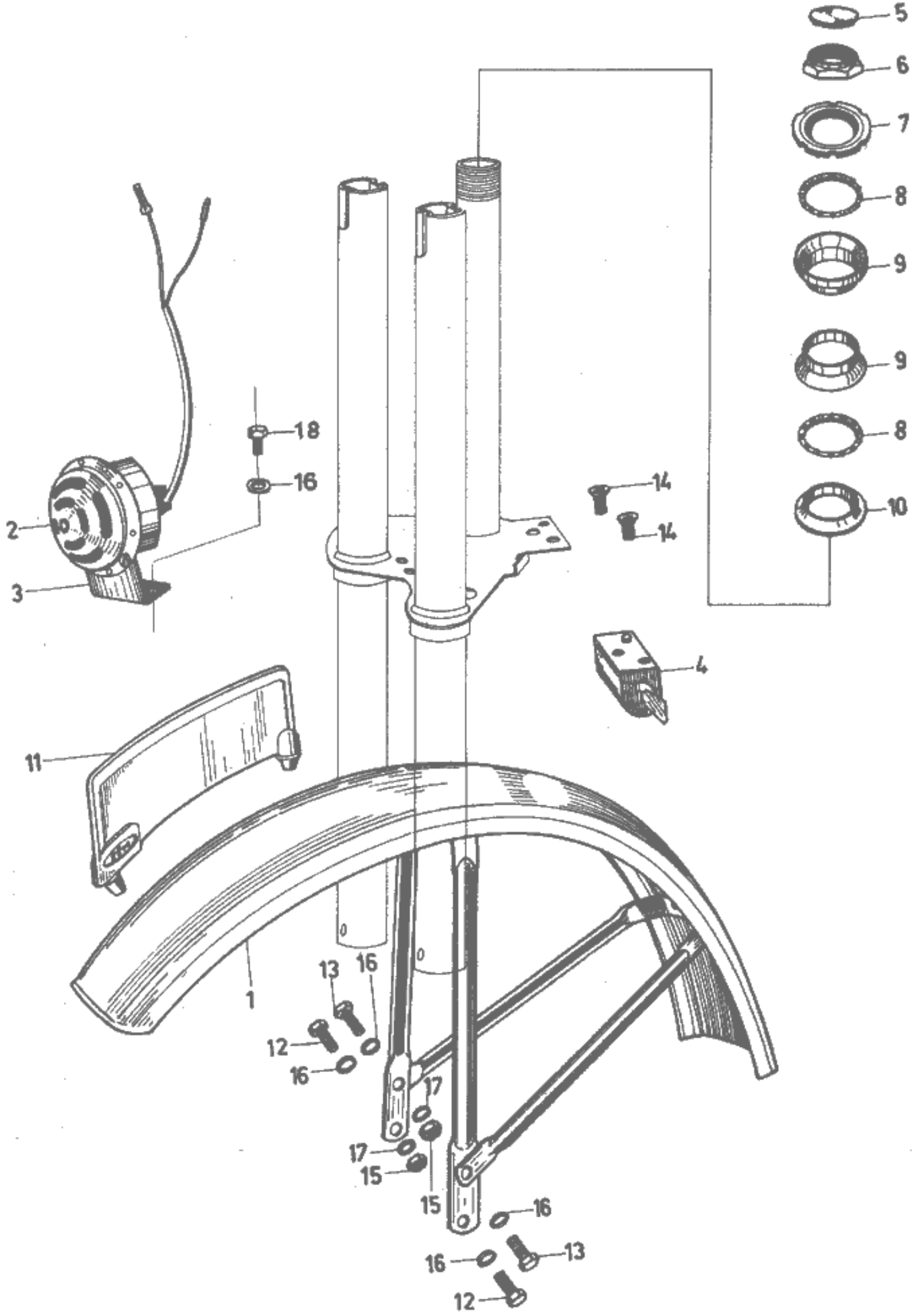


Ref. No.	Part No.	Description	Qty	Remarks
1	16100—099—601	CARBURETTOR ASSY .....	1	
	16100—099—691	CARBURETTOR ASSY .....	1	
		(Used in Netherland)		
2	16194—063—004	CAP, cable .....	1	
3	16118—063—004	ADJUSTER, cable .....	1	
4	16119—063—004	TOP .....	1	
5	16171—044—004	WASHER, top .....	1	
6	16185—044—004	SPRING, throttle .....	1	
7	16156—044—004	PLATE, needle clip .....	1	
8	16157—044—004	CLIP, needle .....	1	
9	16151—063—004	NEEDLE, jet .....	1	
	16151—063—690	NEEDLE, jet (Used in Netherland) .....	1	
10	16141—063—004	VALVE, throttle .....	1	
11	16199—063—004	PLATE, clip .....	1	
12	16181—001—004	SPRING, air screw .....	1	
13	16162—044—004	SCREW, air .....	1	
14	16181—250—004	SPRING, throttle stop screw .....	1	
15	16163—063—004	SCREW, throttle stop .....	1	
16	16164—225—004	SCREW, drain .....	1	
17	16189—056—004	WASHER, fiber, 6.2 $\phi$ .....	1	
18	16122—063—004	FLOAT .....	1	
19	16197—063—004	PACKING .....	1	
20	16173—063—004	O-RING, 43 $\phi$ .....	1	
21	16196—063—014	PLATE, arm pin set .....	1	
22	16126—063—014	PIN, arm .....	1	
23	16127—063—014	ARM, float .....	1	
24	16176—551—004	O-RING, 3.2 $\phi$ .....	1	

Ref. No.	Part No.	Description	Qty	Remarks
25	99114-063-0500	JET, main (#50) .....	1	
	99114-063-0520	JET, main (#52) .....	1	
	99114-063-0550	JET, main (#55) (S.T.D.) .....	1	
		(Used in Netherland)		
	99114-063-0580	JET, main (#58) .....	1	
	99114-063-0600	JET, main (#60) .....	1	
	99114-063-0620	JET, main (#62) (S.T.D.) .....	1	
	99114-063-0650	JET, main (#65) .....	1	
	99114-063-0680	JET, main (#68) .....	1	
26	16133-081-004	JET, needle .....	1	
	16133-081-690	JET, needle (Used in Netherland) .....	1	
27	93500-03005-0A	SCREW, pan., 3 x 5 .....	2	
28	93500-04012-0A	SCREW, pan., 4 x 12 .....	2	
29	94111-03000	WASHER, spring, 3 mm .....	1	
30	94111-04000	WASHER, spring 4 mm .....	2	
31	95001-35140	TUBE, fuel, 3.5 x 140 .....	1	
32	16123-063-004	VALVE, float .....	1	



Ref. No.	Part No.	Description	Qty	Remarks
1	11200—081—020	CASE, L. crank .....	1	
2	11215—081—000	BUSH, 17.5 mm .....	1	
3	11218—081—000	PLATE, bush set, 17.5 mm .....	2	
4	14101—081—020	SHAFT, cam .....	1	
5	15381—081—000	SHAFT A, oil pump drive .....	1	
6	15382—081—000	SHAFT B, oil pump drive .....	1	
7	15331—035—000	ROTOR, oil pump inner .....	1	
8	15332—035—000	ROTOR, oil pump outer .....	1	
9	90081—044—000	BOLT, sealing, 8 mm .....	1	
10	90488—044—000	WASHER, 8 mm .....	1	
11	90471—081—000	WASHER, pump side .....	1	
12	93500—06014	PAN, screw 6 x 14 .....	2	
13	12391—081—040	GASKET, cylinder head cover .....	1	
14	12301—081—060	COVER, cylinder head .....	1	

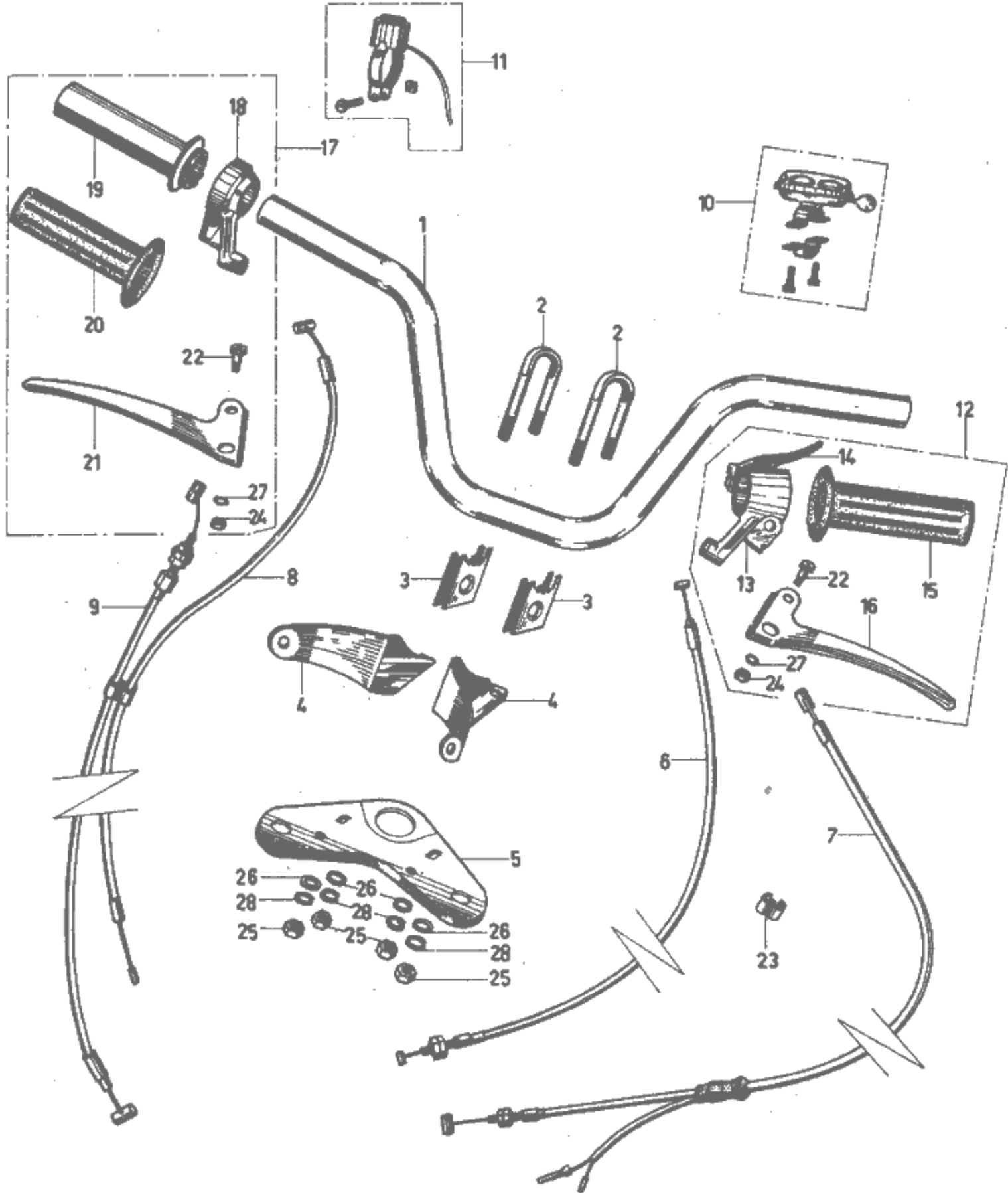


Ref. No.	Part No.	Description	Qty	Remarks
1	61100—099—000	FENDER, front .....	1	Y6. colour
2	38100—099—600	HORN .....	1	
3 *		STAY, horn .....	1	
4	53600—044—000	LOCK, steering handle .....	1	
5	90302—093—000	CAP, steering nut .....	1	
6	90301—093—003	NUT, steering head stem .....	1	
7	53211—093—003	RACE, top steering cone .....	1	
8	53213—093—003	CAGE, ball ass'y .....	2	
9	50301—093—003	RACE, steering ball .....	2	
10	53212—093—003	RACE, bottom, steering cone .....	1	
11	87900—049—000	PLATE, ornament .....	1	NL only
12	92000—06012	BOLT, hex., 6 x 12 .....	4	
13	92000—06015	BOLT, hex., 6 x 15 .....	2	
14	93600—06012	SCREW, flat 6 x 12 .....	2	
16	94101—06000	WASHER, plain 6 mm .....	6	
19	90201—093—000	WASHER, plain 26 mm .....	1	Steering set part

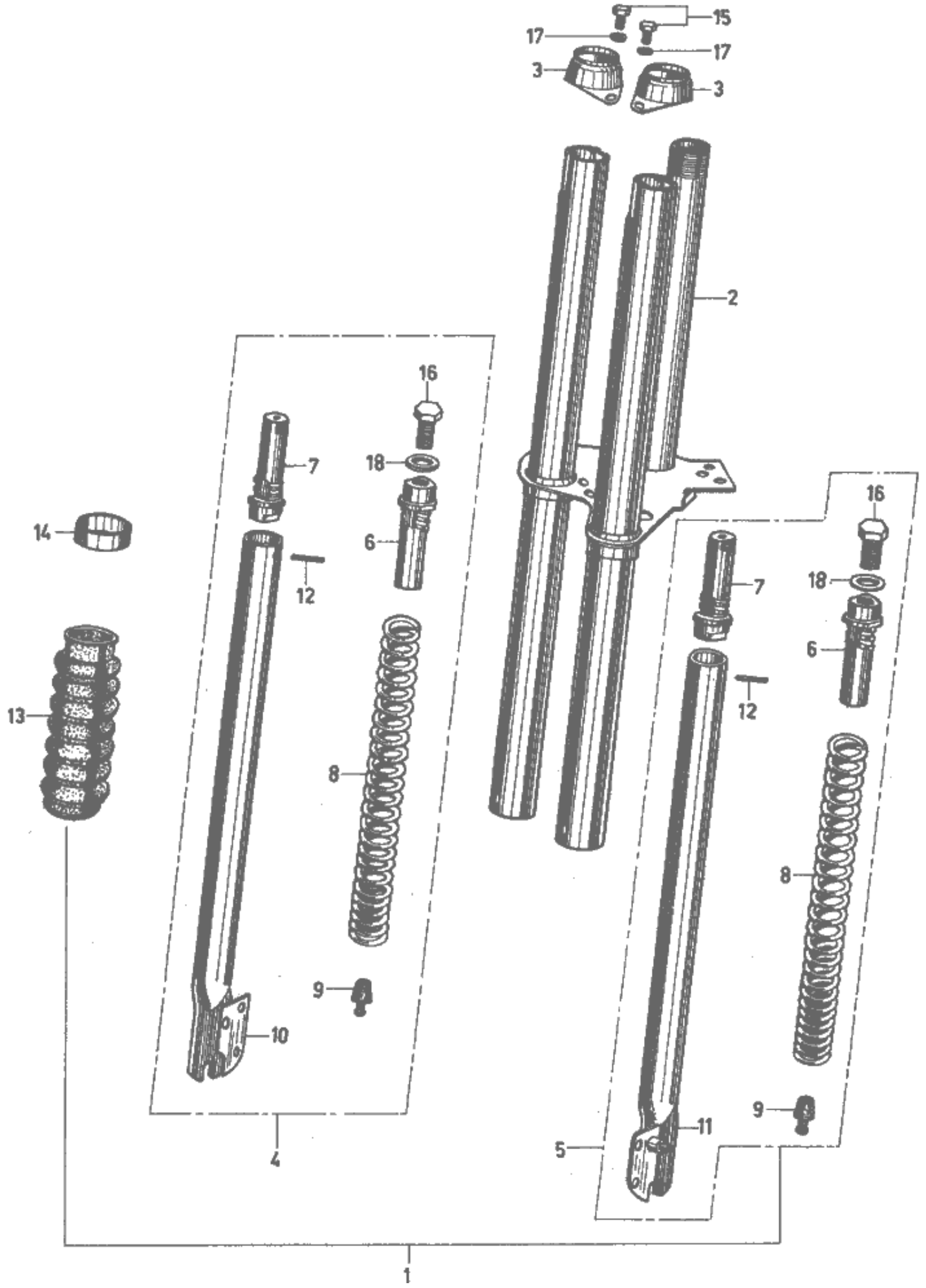
\* Not available separately.

Steering set = n° 5 → 10 † n° 19.





Ref. No.	Part No.	Description	Qty	Remarks
1	53100—099—000	HANDLE, steering pipe .....	1	
2	53111—093—000	HOLDER, handle pipe .....	2	
3	53112—093—000	BASE, handle pipe .....	2	
4	51516—093—000	STAY, right, headlight .....	1	
	51517—093—000	STAY, left, headlight .....	1	
5	53230—093—000	BRIDGE, fork top .....	1	
6	14950—099—000	CABLE, decomp. ....	1	
7	43450—099—000	CABLE, rear brake .....	1	+ stopswitch
8	17910—099—000	CABLE, throttle .....	1	
9	45450—093—000	CABLE, front brake .....	1	
10	38110—027—610	BELL .....	1	
11	38700—050—620	BUTTON, horn .....	1	
12	53001—093—003	HANDLE GRIP, brake comp. ....	1	Ass'y
13	53173—093—003	HOLDER, lever handle grip, left .....	1	
14	53181—093—003	LEVER, decomp. ....	1	
15	53166—093—003	RUBBER, left grip .....	1	
16	53178—093—003	LEVER, left handle .....	1	
17	53002—093—003	HANDLE GRIP, throttle comp. ....	1	Ass'y
18	53152—093—003	HOLDER, throttle handle grip comp. ....	1	
19	53141—093—003	PIPE, throttle grip .....	1	
20	53165—093—003	RUBBER, right grip .....	1	
21	53175—093—003	LEVER, right handle .....	1	
22	90114—093—003	SCREW, handle lever pivot .....	2	
23	91407—099—000	TUBE, cable cover L .....	1	
	91406—099—000	TUBE, cable cover R .....	1	
24	94001—05000	NUT, hex. 5 mm .....	2	
25	94001—06000	NUT, hex. 6 mm .....	4	
26	94101—06000	WASHER, plain 6 mm .....	4	
27	94111—05000	WASHER, fan 5 mm .....	2	
28	94111—06000	WASHER, spring 6 mm .....	4	

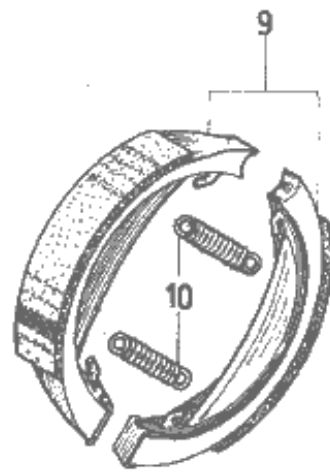
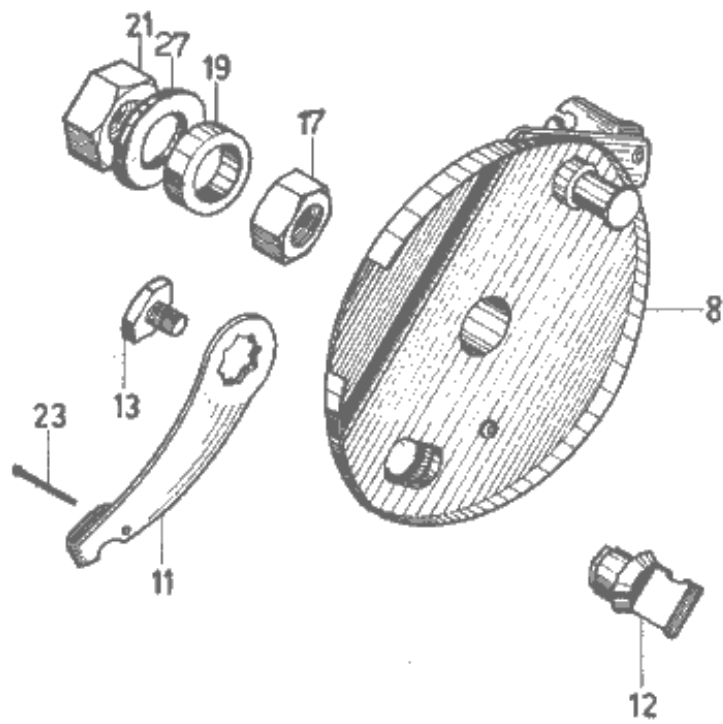


Ref. No.	Part No.	Description	Qty	Remarks
1	51500—099—000	FRONT, fork Ass'y .....	1	PF50/A00001
Δ	51500—099—010	FRONT, fork Ass'y .....	1	PF50/A19388 See colour chart
2	51510—099—000	FRONT, fork, comp. ....	1	PF50/A00001
	51510—099—010	FRONT, fork Ass'y .....	1	PF50/A19388
3	51602—093—000	COVER, front fork .....	2	
4	51520—099—000	PIPE, slide comp. right front fork .....	1	PF50/A00001
	51520—099—010	PIPE, slide comp. right front fork .....	1	PF50/A19388
5	51530—099—000	PIPE, slide, comp. left front fork .....	1	PF50/A00001
	51530—099—010	PIPE, slide, comp. left front fork .....	1	PF50/A19388
6 *		HOLDER, cushion spring .....	2	
7 *		HOLDER, cushion spring .....	2	
8 *		SPRING, front cushion .....	2	
9 *		RUBBER, front cushion stopper .....	2	
10 *		PIPE, slide right, front fork half .....	1	
11 *		PIPE, slide, left, front fork half .....	1	
12 *		PIN, spring 4 x 24 .....	2	
13	51505—093—000	BOOT, front fork (black) .....	2	
14	51518—093—000	BAND, chrome, front fork .....	2	
15	92000—06008	BOLT, hex. 6 x 8 mm .....	2	
16 *		BOLT, hex. 10 x 30 mm (pitch 1.25) .....	2	
17	94101—06000	WASHER, plain 6 mm .....	2	
18*		WASHER, plain 10 mm .....	2	

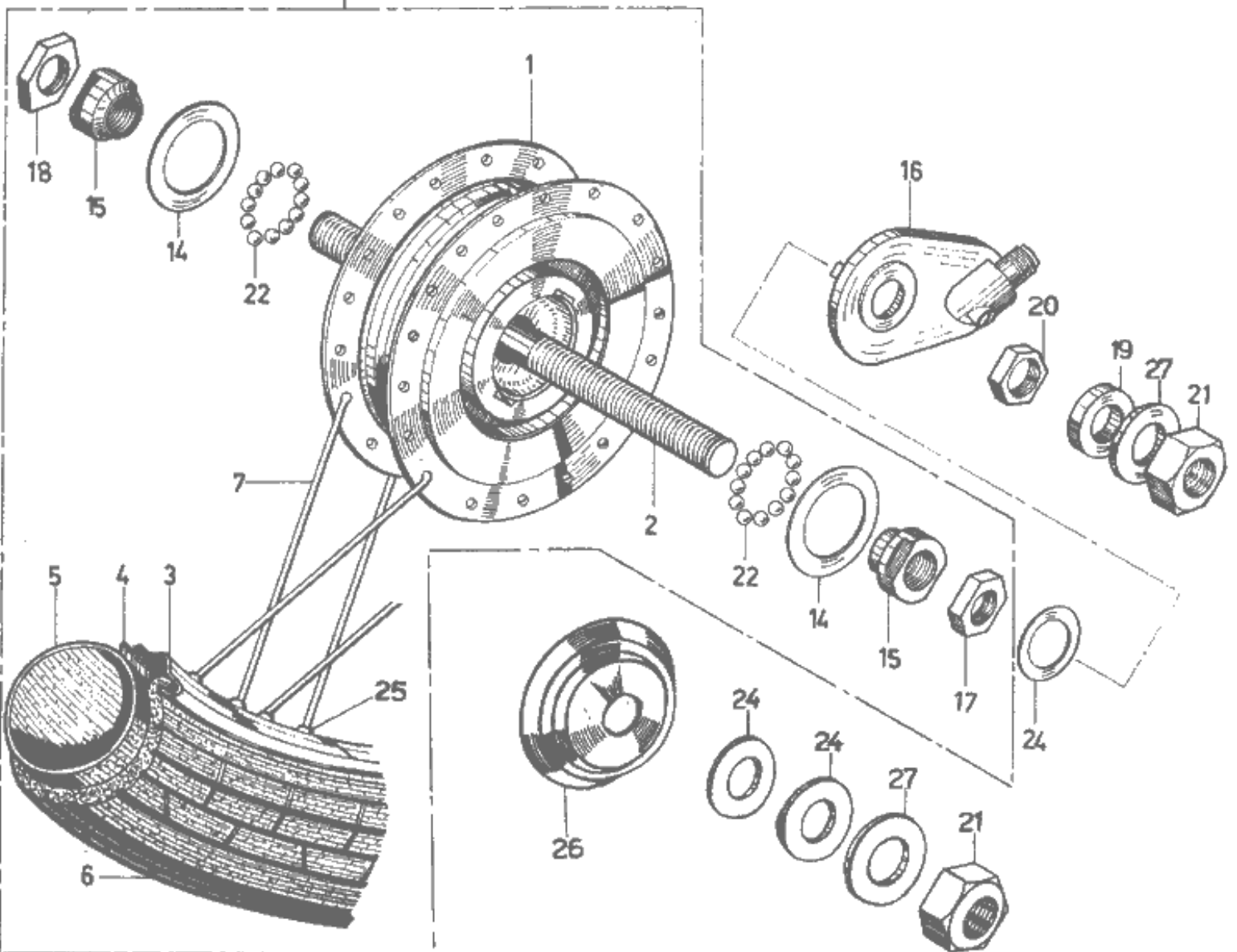
\* Not available separately.

Δ Front Fork Ass'y 51500—099—010 = n° 1 → 18

+ Bridge Fork Top n° 53230—093—000 (Page 24 N° 5)



ASSY

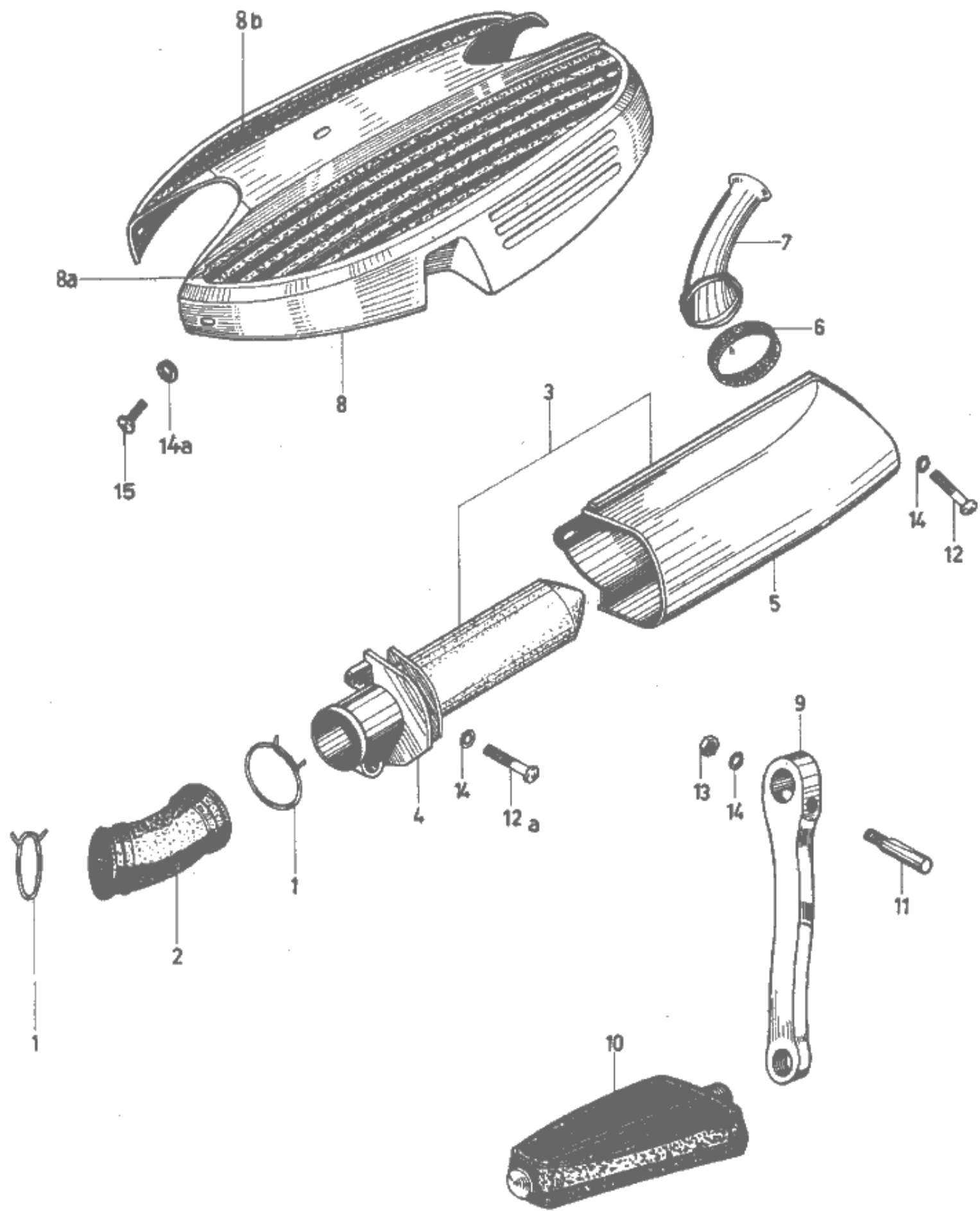


Ref. No.	Part No.	Description	Qty	Remarks
	44600—099—000	WHEEL, comp. front .....	1	(no panel)
	44610—093—000	HUB, front wheel comp. ....	1	
1	44601—093—000	HUB, front wheel .....	1	
2	44301—093—003	AXLE, front wheel .....	1	
3	44701—099—000	RIM, wheel 17" .....	1	
4	44713—044—000	FLAP, tire .....	1	
5	44712—044—000	TUBE, front wheel .....	1	
6	44711—044—154	TIRE, front wheel .....	1	
7	97463—11214	SPOKE, front .....	36	
	45100—093—003	PANEL, front brake comp. ....	1	
8	45110—093—003	PLATE, front brake panel comp. ....	1	
9	45120—093—003	SHOE, brake .....	2	
10	45133—093—003	SPRING, brake shoe .....	2	
11	45410—093—003	ARM, front brake .....	1	
12	45131—093—003	CAM, front brake .....	1	
13	90122—093—003	BOLT, arm brake setting .....	1	
14	90505—093—003	WASHER, plain 29.2 mm .....	2	
15	44302—093—003	CONE RACE, front wheel .....	2	
15bis	44303—093—003	BALL, race front wheel .....	2	
16	44800—099—000	GEAR BOX, speedometer .....	1	
17	90313—093—003	NUT, hex. thin B. 11 mm .....	2	
18	90314—093—003	NUT, hex. thin A. 11 mm .....	1	
19	44311—093—000	COLLAR, R & L, front axle .....	2	
20	90312—093—003	NUT, hex. 11 mm .....	1	
21	94001—11000	NUT, hex. 11 mm .....	2	
22	96211—07000	BALL, steel 5.55 $\phi$ .....	22	
23	94201—15160	PIN, split 1.5 x 16 mm .....	1	
24	44807—093—000	WASHER, plain A, 11 mm x 2 .....	3	
25	97000—11000	NIPPLE, front # 13 .....	36	
26	44312—099—600	PROTECTOR, front wheel hub .....	1	} Assy' without speedometer
27	94101—10200	WASHER, plain 10 mm .....	2	

— PANEL, front brake comp. 45100—093—003 = N° 8 → 13 + 23

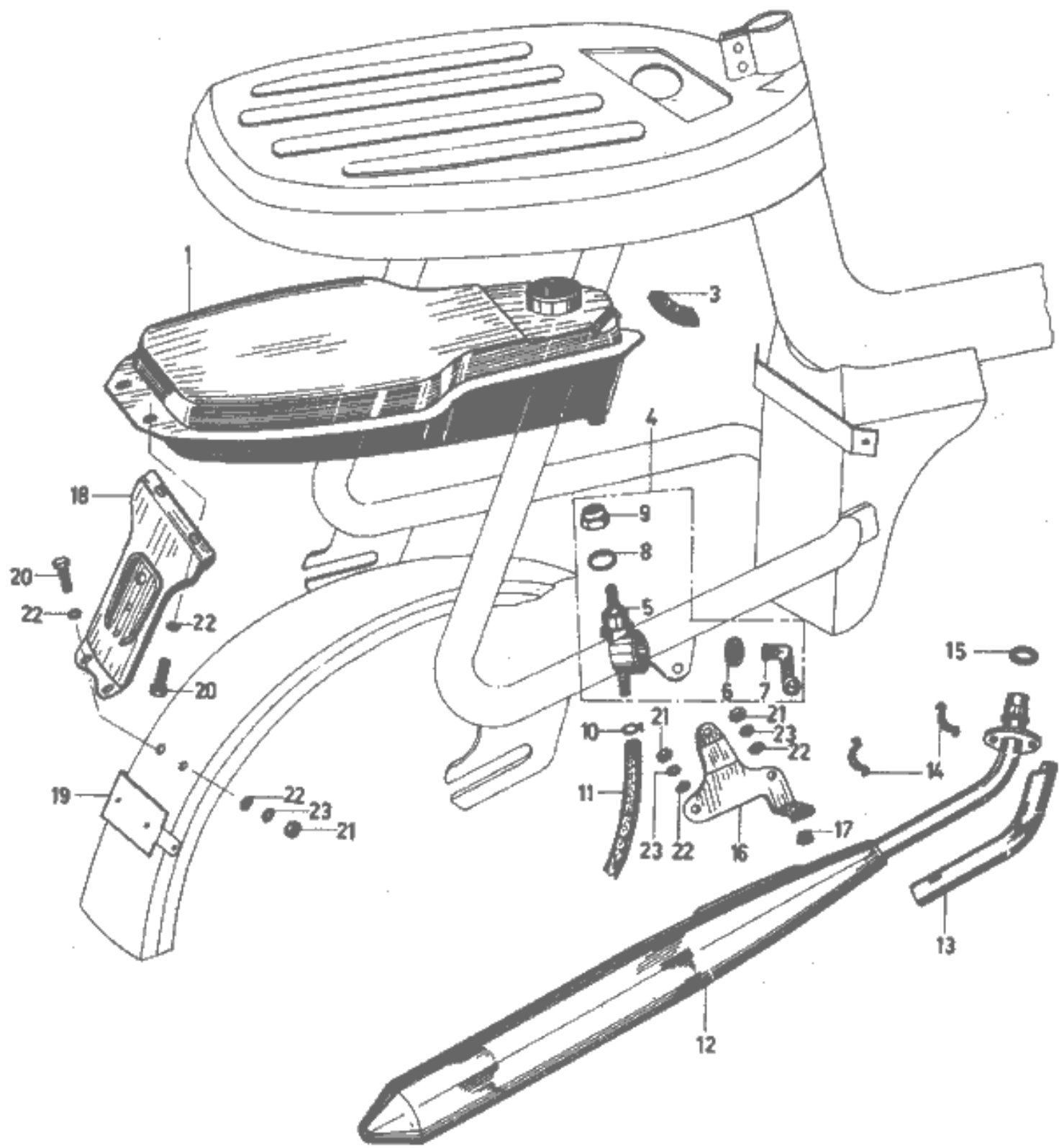
— WHEEL, comp. front 44600—099—000 =  $\left[ \begin{array}{c} \text{---} \\ \text{---} \\ \text{---} \end{array} \right]$  — N° 4, 5 & 6

— HUB, front wheel comp. 44610—093—000 = N° 1, 2, 22, 14, 15, 17, 18.



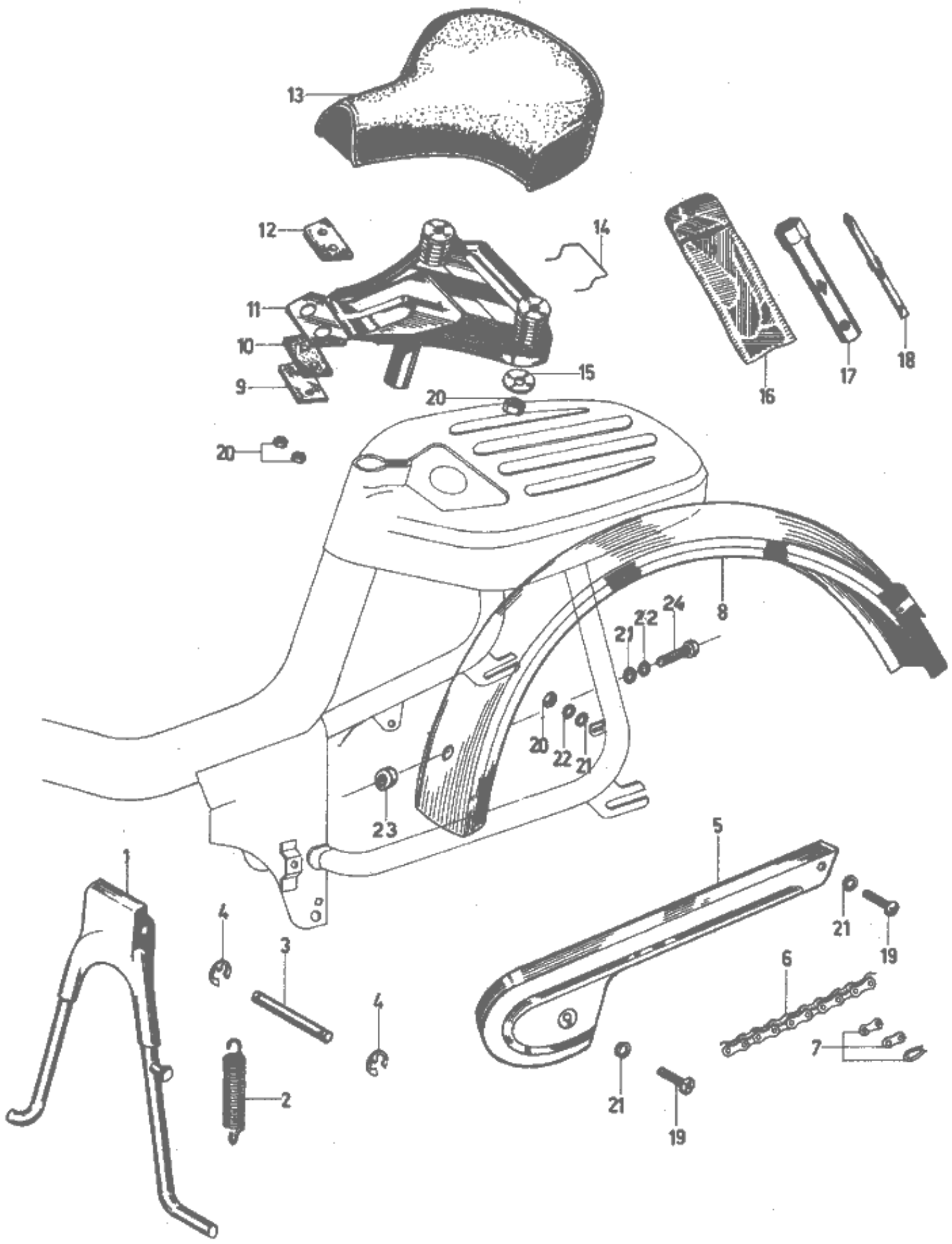
Ref. No.	Part No.	Description	Qty	Remarks
<del>1</del>	<del>17255-063-000</del>	<del>CLIP, connecting tube, air cleaner</del>	<del>2</del>	<del>Cancelled</del>
2	17253-063-010	TUBE, connecting, air cleaner	1	
3	17200-063-030	CLEANER ASS'Y, air	1	
4	17205-063-020	ELEMENT, air cleaner	1	
5	17225-063-020	CASE, air cleaner	1	
6	17227-063-010	PACKING, inlet tube	1	
7	17251-081-000	TUBE, air cleaner inlet	1	1 B
	17251-044-010	TUBE, air cleaner inlet	1	1 NL
8	83600-099-020	COVER, engine	1	XL colour
8a	83601-099-300	MAT, COVER engine Right	1	
8b	83602-099-300	MAT, COVER engine Left	1	
9	40220-093-000	ARM, crank right	1	
	40230-093-000	ARM, crank left	1	
10	90609-031-000	PEDAL, comp. crank R/H	1	
	90709-031-000	PEDAL, comp. crank L/H	1	
11	40235-093-000	PIN, crank arm setting	2	
12	93500-06015	SCREW, pan, 6 x 15	1	
12a	93500-06018	SCREW, pan, 6 x 18	1	
13	94001-06000	NUT, hex. 6 mm	2	
14	94101-06000	WASHER, plain 6 mm	4	
14a	90502-099-000	WASHER, plain 6.5 mm x 18 x 1.5	5	
15	93500-06012	SCREW, pan, 6 x 12	5	



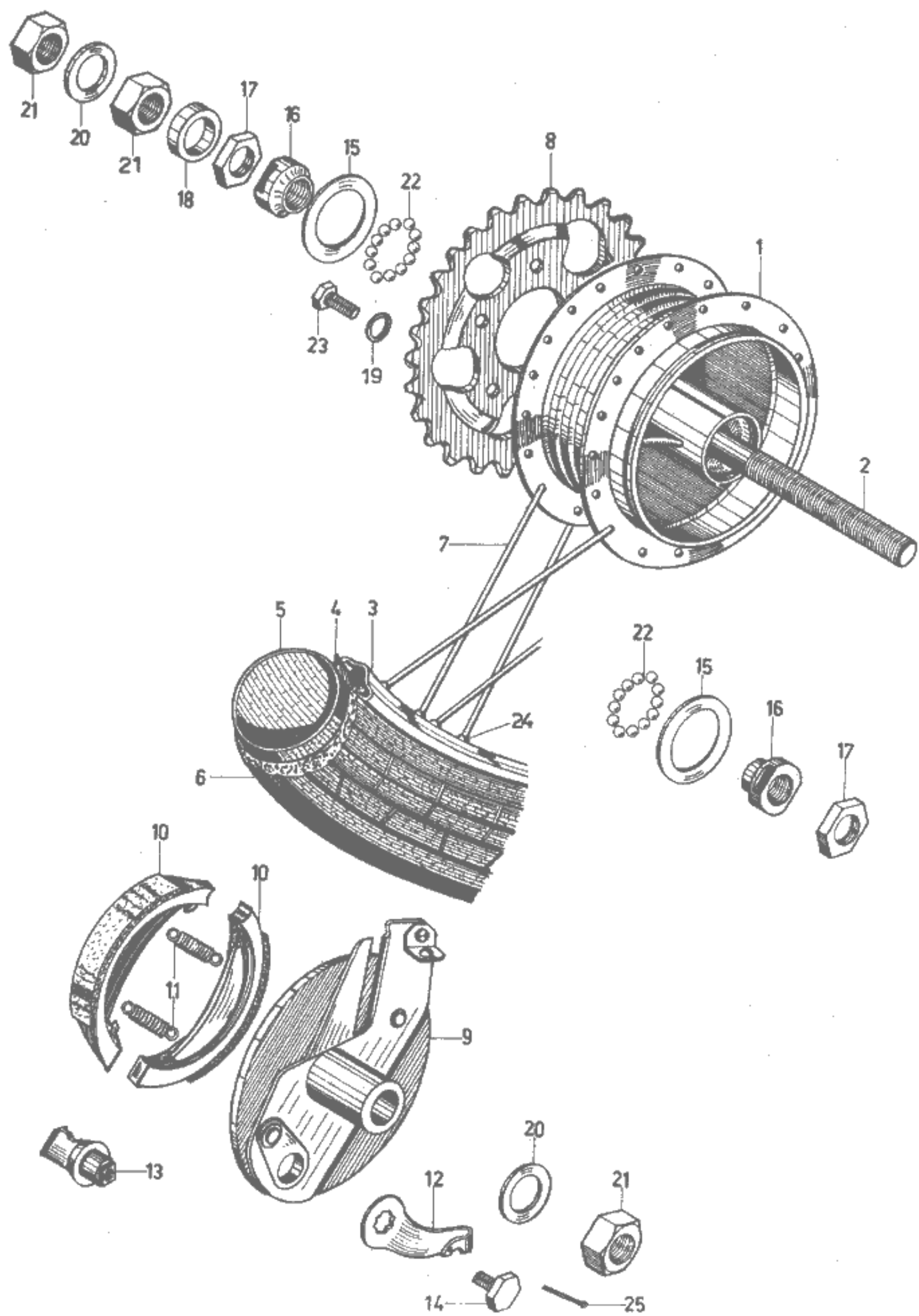


Ref. No.	Part No.	Description	Qty	Remarks
1	17500—099—010	FUEL TANK .....	1	see colour chart
2	17620—093—000	CAP, fuel filler .....	1	
3	17651—099—000	RUBBER, tank setting .....	1	
4	16950—099—159	COCK, fuel ass'y .....	1	
5 *		BODY, fuel cock .....	1	
6 *		HOLDER, lever, cock .....	1	
7 *		LEVER, cock .....	1	
8 *		PACKING, cock .....	1	
9 *		NUT, turn buckle .....	1	
10	95002—45000	CLIP, fuel tube .....	2	
11	95001—45475—00	TUBE, fuel 4.5 x 475 .....	1	
12	18300—081—020	MUFFLER, comp. exhaust .....	1	
13	18400—081—020	COVER, exhaust pipe .....	1	
14	18401—063—000	CLIP, exhaust cover .....	2	
15	18291—044—020	GASKET, exhaust pipe .....	1	
16	18351—099—020	HANGER, muffler .....	1	see colour chart
17	50524—023—000	RUBBER, mainstand stopper .....	1	
18	84701—099—010	PLATE, taillight .....	1	see colour chart
19	84208—099—690	HOLDER, insurance plate .....	1	NL only
20	92000—06015	BOLT, hex. 6 x 15 mm .....	3	
21	94001—06000	NUT, hex. 6 mm .....	6	
22	94101—06000	WASHER, plain 6 mm .....	8	
23	94111—06000	WASHER, spring 6 mm .....	4	

\* = Not available separately



Ref. No.	Part No.	Description	Qty	Remarks
1	50500—099—010	STAND MAIN .....	1	see colour chart
2	50522—099—000	SPRING, main stand .....	1	
3	90111—093—000	SHAFT, main stand .....	1	
4	90300—093—000	SEEGER RING RS8 .....	2	
5	40510—099—000	CASE, drive chain .....	1	see colour chart
6	40530—099—690	CHAIN, drive .....	1	84 links - NL
	40530—099—620	CHAIN, drive .....	1	86 links - B-F-G/B
7	40531—099—003	JOINT, drive chain .....	1	D-SF-DK
8	80100—099—010	FENDER, rear .....	1	PF50/A16509
	80100—099—690	FENDER, rear .....	1	B - XL colour
	80100—099—620	FENDER, rear .....	1	NL - XL colour
	80100—099—600	FENDER, rear .....	1	F - XL colour
9	77131—044—000	WASHER, saddle, hinge rubber .....	1	G/B - see colour chart
10	77125—044—300	RUBBER B, saddle hinge .....	1	
11	77135—044—000	FRAME, saddle .....	1	
12	77123—044—300	RUBBER A, saddle hinge .....	1	
13	77011—044—010	SEAT .....	1	
14	83541—099—000	SPRING, tool fixing .....	1	
15	77133—044—020	PLATE, spring setting .....	2	
16	89101—063—000	BAG, tool .....	1	
17	83517—063—000	WRENCH, spark plug .....	1	
18	83513—044—000	DRIVER .....	1	
19	93500—06012	SCREW, pan. 6 x 12 mm .....	2	
20	94001—06000	NUT, hex. 6 mm .....	5	
21	94101—06000	WASHER, plain 6 mm .....	4	frame - rear fender
22	94111—06000	WASHER, spring 6 mm .....	4	
23	90202—093—000	COLLAR, distance rear fender .....	1	PF50/A00001 - A/16509
	80111—099—000	COLLAR, distance rear fender .....	1	PF50/A16509
	90502—099—000	WASHER, plain 6.5 x 18 x 1.5 .....	1	PF50/A16509
	80112—099—000	RUBBER A, rear fender .....	1	PF50/A16509
	80113—099—000	RUBBER B, rear fender .....	1	PF50/A16509
24	92000—06018	BOLT, hex. 6 x 18 .....	1	PF50/A00001 - A/16509
	92000—08025	BOLT, hex. 8 x 25 .....	1	PF50/A16509
25	77127—044—020	SPRING, seat cushion .....	2	

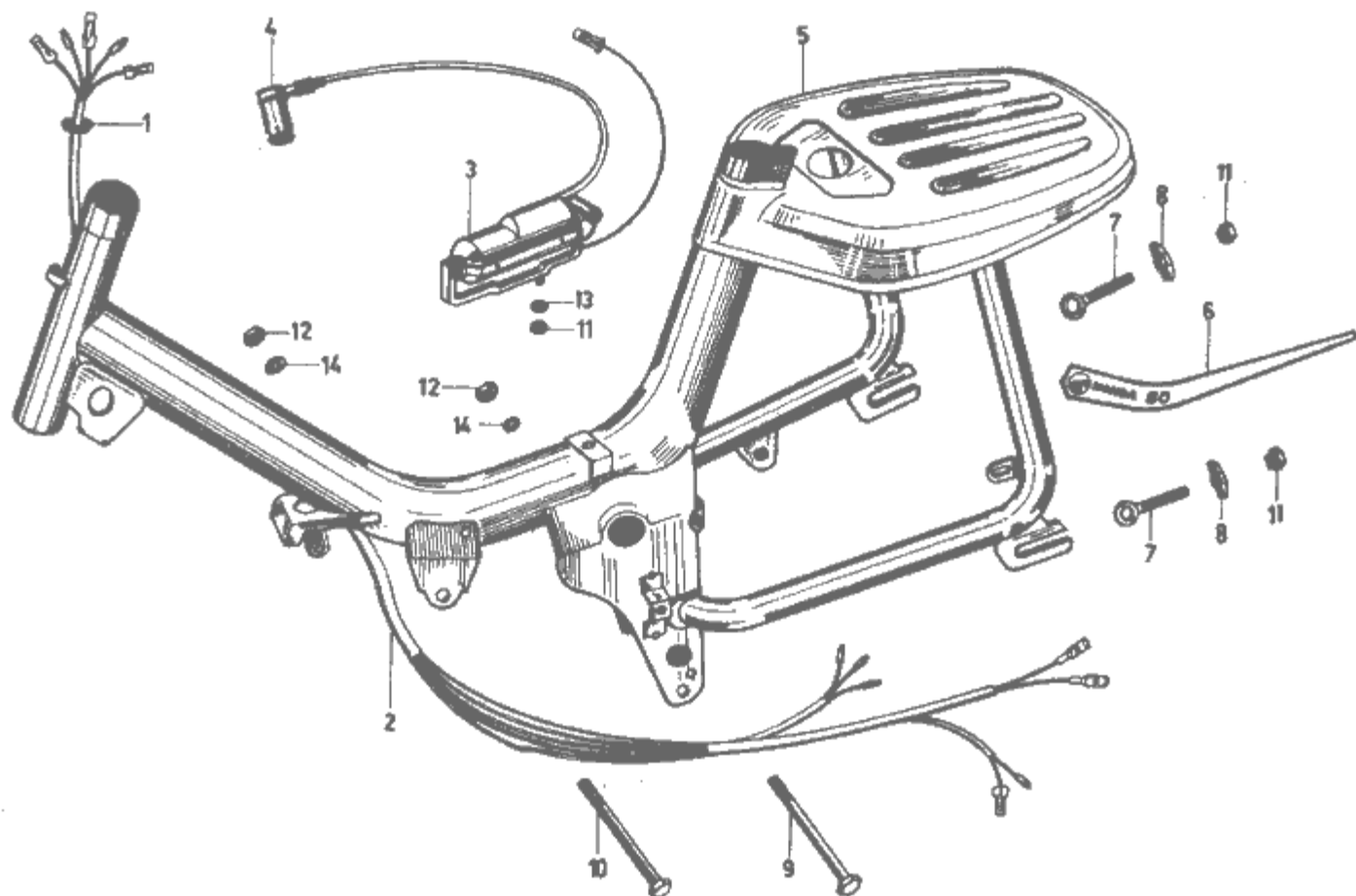


Ref. No.	Part No.	Description	Qty	Remarks
	42600—099—000	WHEEL, comp. rear .....	1	Ass'y (without panel)
	42610—099—003	HUB comp., rear wheel .....	1	Ass'y
1	42601—099—003	HUB, rear wheel .....	1	
2	42301—099—003	AXLE, rear wheel .....	1	
3	42701—099—000	RIM, wheel 17" .....	1	
4	44713—044—000	FLAP, tire .....	1	
5	44712—044—000	TUBE, wheel .....	1	
6	44711—044—154	TIRE, wheel 21" x 2" .....	1	
7	97524—21220	SPOKE, rear .....	36	
8	41201—099—010	SPROCKET, final driven .....	1	26 t B-6/B
	41201—099—690	SPROCKET, final driven .....	1	25 t NL
	41201—099—620	SPROCKET, final driven .....	1	28 t F-D-SP-DK
	43050—099—003	PANEL, rear brake comp. ....	1	
9	43100—099—003	PLATE, rear brake panel comp. ....	1	
10	45120—093—003	SHOE, comp. brake .....	2	
11	45133—093—003	SPRING, brake shoe .....	2	
12	45410—093—003	ARM, brake .....	1	
13	45131—093—003	CAM, brake .....	1	
14	90122—093—003	BOLT, brake arm setting .....	1	
15	90505—099—003	WASHER, plain 29.15 x 0.4th .....	2	
16	42602—099—003	CONE RACE, rear wheel .....	2	
16bis	42603—099—003	CONE, race, rear wheel .....	2	
17	90313—099—003	NUT, hex. thin 12 mm (p. 100) .....	3	
18	42620—099—003	COLLAR, distance rear axle .....	1	
19	90522—099—000	WASHER, tongued .....	1	
20	94101—12000	WASHER, plain 12 mm .....	2	
21	90315—099—003	NUT, hex. rear axle .....	2	
22	96211—06000	BALL, steel 4.75 $\phi$ .....	26	
23	92000—06018	BOLT, hex. 6 x 18 .....	5	
24	97000—21000	NIPPLE, rear # 12 .....	36	
25	94201—15160	PIN, split 1.5 x 16 mm .....	1	

PANEL, rear brake comp. 43050—099—003 = No. 9  $\rightarrow$  14 + 25

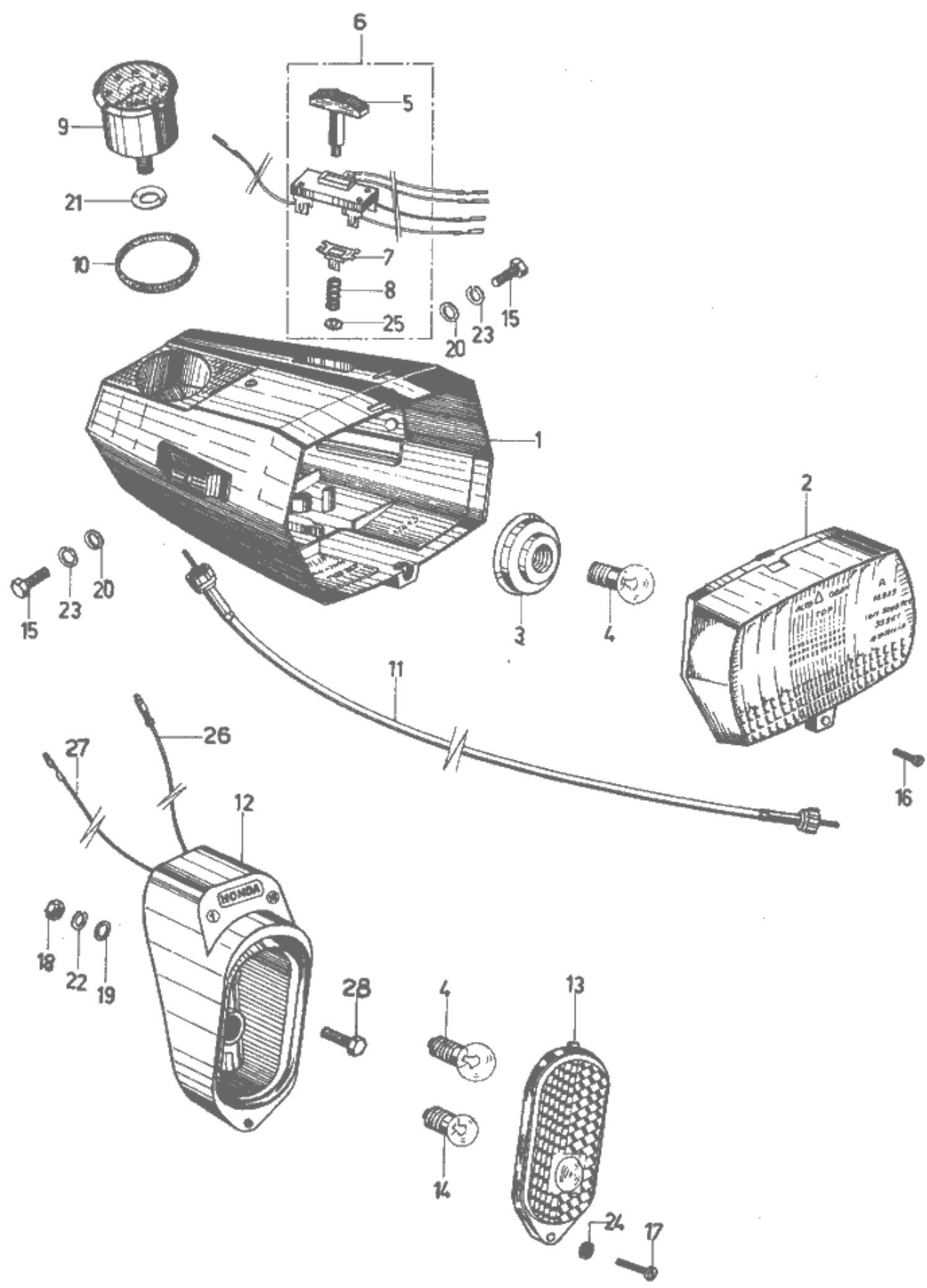
WHEEL comp., rear: 42600—099—000 = No. 1  $\rightarrow$  25 — 4, 5, 6, 8  $\rightarrow$  14, 19, 23, 25

HUB rear wheel comp. 42610—099—003 = No. 1, 2, 22, 15, 16, 17



Ref. No.	Part No.	Description	Qty	Remarks
1	32983—063—000	GROMMET, wire cord .....	2	
2	32100—099—000	HARNESS, wire .....	1	B - N-E - F
3	30500—099—004	COIL, ignition .....	1	
4	30700—063—681	CAP, ass'y noise suppressor .....	1	
5	50100—099—000	BODY, comp. frame .....	1	see colour chart
6	87121—099—000	EMBLEM, Right carrier .....	1	
	87122—099—000	EMBLEM, Left carrier .....	1	
7 *		ADJUSTER, drive chain .....	2	
8 *		RECEIVER, adjuster drive chain .....	2	
9	92020—08080	BOLT, hex. 8 x 80 .....	1	
10	92020—08090	BOLT, hex. 8 x 90 .....	1	
11 *		NUT, hex. 6 mm .....	3	
12	94001—08000	NUT, hex. 8 mm .....	2	
13	94101—06000	WASHER, plain 6 mm .....	1	
14	94101—08000	WASHER, plain 8 mm .....	2	

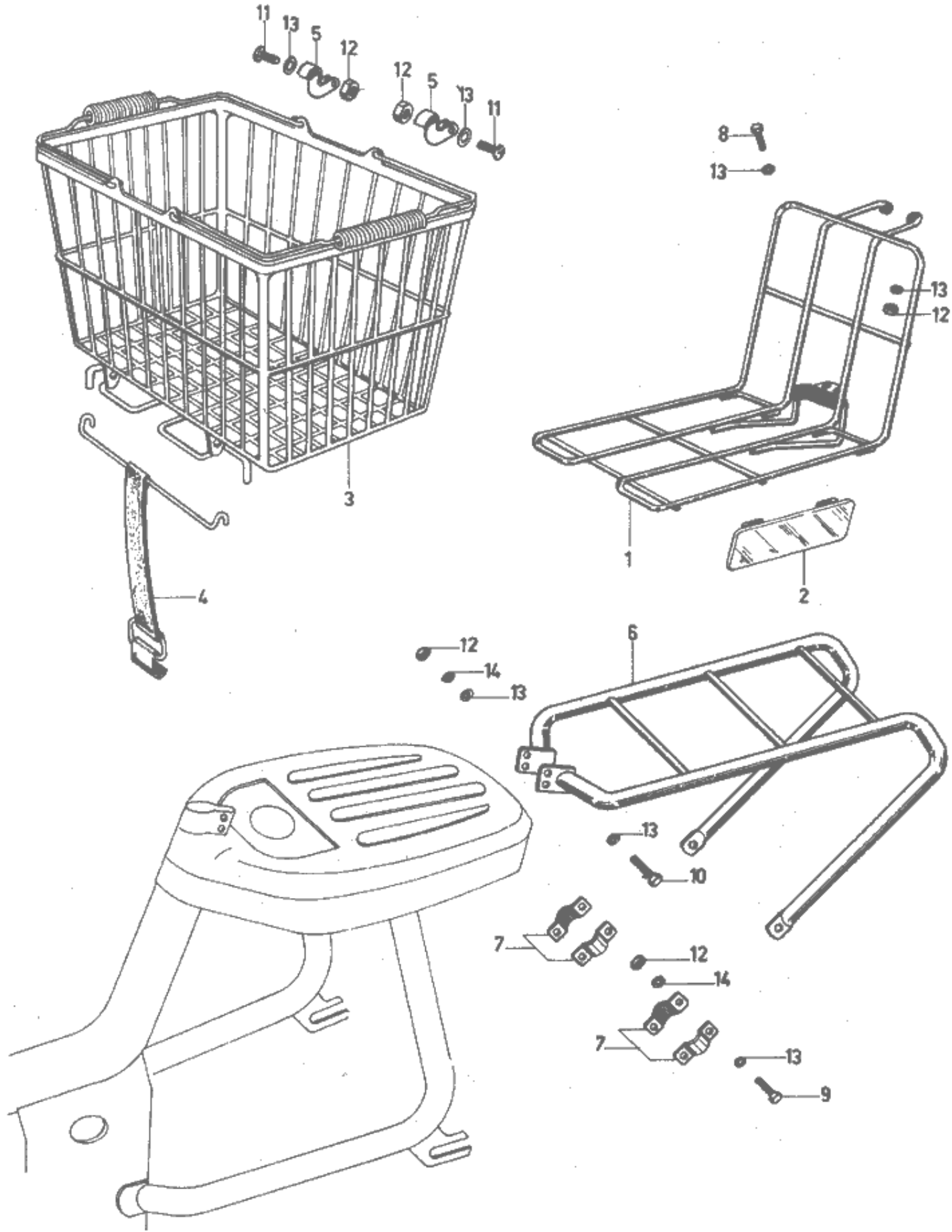
\* = Not available separately.





Ref. No.	Part No.	Description	Qty	Remarks
	33100—099—159	LIGHT, ass'y head .....	1	No bulb
1	61301—099—159	CASE, headlight .....	1	
2	33121—099—159	LENS, headlight .....	1	
3	33130—099—159	SOCKET, headlight .....	1	B & NL stop &
4	34901—063—690	BULB, headlight (6V - 6W) .....	2	headlight
	34901—050—621	BULB, headlight (6V - 6W) .....	1	F - yellow
5 *		BUTTON, lighting switch .....	1	
6 *		SWITCH, lighting ass'y .....	1	
7 *		PLATE, contact .....	1	
8 *		SPRING, switch lighting .....	1	
9	37200—093—000	SPEEDOMETER .....	1	Kilometer
10	37202—099—000	GASKET, speedometer .....	1	
11	44830—094—179	CABLE, speedometer .....	1	Ass'y + bult
	33700—064—620	LIGHT, tail ass'y .....	1	F & B
	33700—064—690	LIGHT, tail ass'y .....	1	NL - Ass'y + bulb
12	33705—064—690	BODY, taillight .....	1	
13	33701—064—620	LENS, taillight .....	1	F & B
	33701—064—690	LENS, taillight .....	1	NL
14	34906—093—000	BULB, taillight (10V - 0.32A) .....	1	
15	92000—06020	BOLT, hex. 6 x 20 .....	2	
16	33122—099—159	SCREW, lens headlight 3 x 12 mm .....	1	
17	90131—093—000	SCREW, tapping 3 x 13 mm .....	1	
18	94001—05000	NUT, hex. 5 mm .....	1	
19	94101—05000	WASHER, plain 5 mm .....	1	
20	94101—06000	WASHER, plain 6 mm .....	2	
21	90548—099—000	WASHER, plain 10 mm .....	1	
22	94111—05000	WASHER, spring 5 mm .....	1	
23	94111—06000	WASHER, spring 6 mm .....	2	
24	33702—064—620	PACKING, taillight lens .....	1	
25 *		CLIP RETAINER, lighting switch .....	1	
26	33708—099—000	CORD, taillight .....	1	
27	33712—099—000	CORD, stoplight .....	1	
28	92000—05012	BOLT, hex. 5 x 12 .....	1	

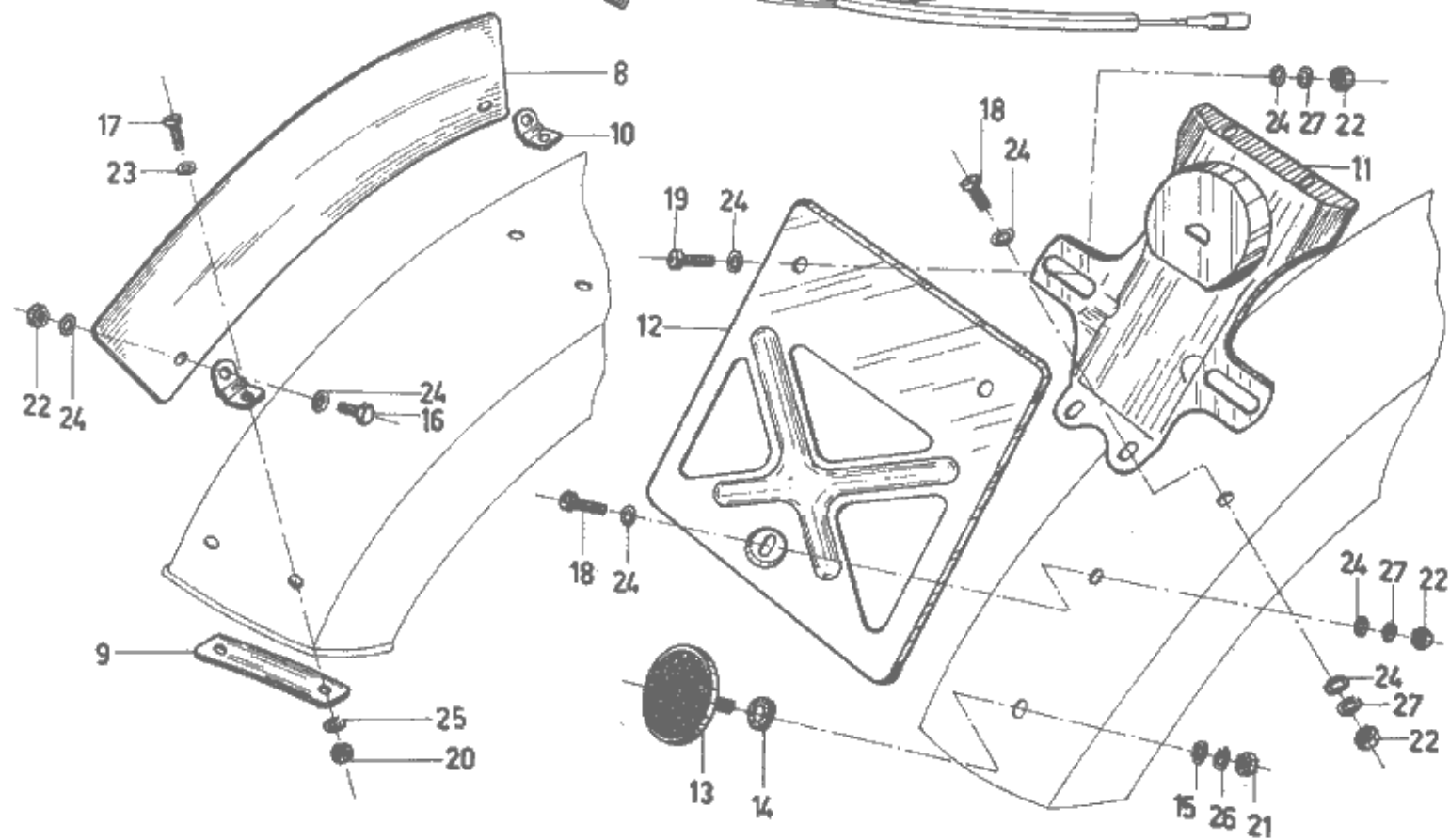
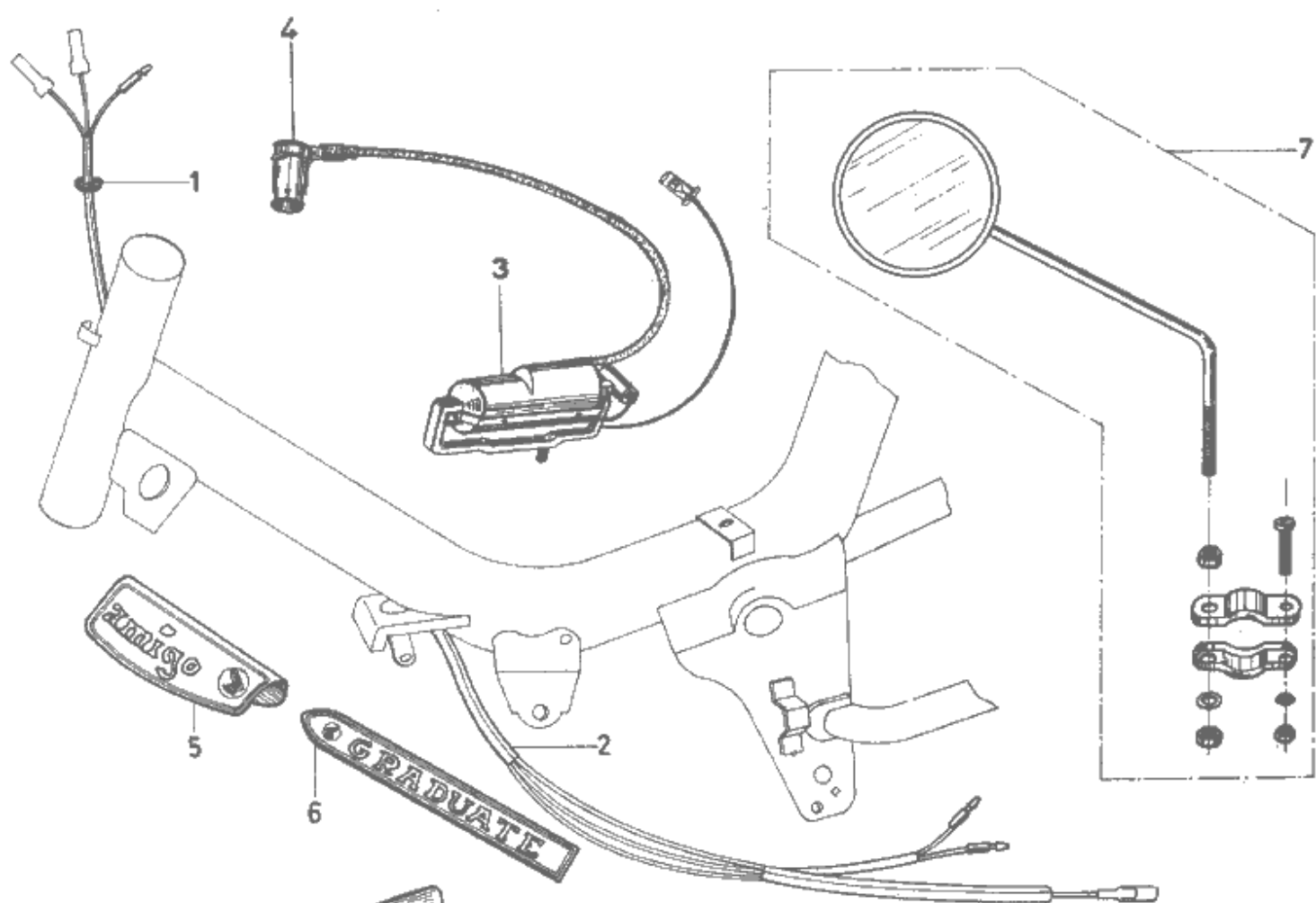
\* = Not available separately.



Ref. No.	Part No.	Description	Qty	Remarks
1	81200—093—000	CARRIER, front .....		1
2	87900—044—690	PLATE, ornament, Right .....		1
	87900—044—690	PLATE, ornament, Left .....		1
3	08101—044—050	BASKET .....		1
4	81221—044—811	HOOK, A, basket .....		1
5	81222—044—810	HOOK, B, basket .....		2
6	81200—099—890	CARRIER, rear .....		1
7	81201—099—890	BRACKET, rear carrier setting .....		2
8	92000—06012	BOLT, hex. 6 x 12 .....		2
9	92000—06015	BOLT, hex. 6 x 15 .....		4
10	92000—08025	BOLT, hex. 8 x 25 .....		1
11	93500—06012	SCREW, cross 6 x 12 .....		2
12	94001—06000	NUT, hex. 6 mm .....		10
13	94101—06000	WASHER, plain 6 mm .....		14
14	94111—06000	WASHER, spring 6 mm .....		6

Ref. No.	Part No.	Description	Qty	Remarks
	33100—099—600	LIGHT, ass'y head .....	1	No bulb
1	63101—099—600	CASE, headlight .....	1	
2	33121—099—600	LENS, headlight .....	1	
3	33122—099—159	SCREW, lens headlight 3 x 12 mm .....	1	
4	33130—099—600	SOCKET, headlight .....	1	
5	34901—001—812	BULB, headlight (6V - 15/15W) .....	1	SF
* 6	35100—099—600	SWITCH, lighting .....	1	
7	37200—099—600	SPEEDOMETER, Miles .....	1	
8	37202—099—000	GASKET, speedometer .....	1	
9	61402—099—600	EMBLEM, light case .....	1	
10	90548—099—000	WASHER, plain 10 mm .....	1	
	33700—099—600	LIGHT, taillight ass'y .....	1	+ bulb
11	33705—099—600	PLATE TALLIGHT, lens holder .....	1	
12	33701—099—600	LENS, taillight .....	1	
13	33708—099—600	CORD, taillight .....	1	
14	33709—099—600	PACKING, lens taillight .....	1	
15	34901—099—600	BULB, taillight 6V 6W .....	1	
16	92000—06020	BOLT, hex. 6 x 20 .....	2	
17	93500—05022	SCREW, panhead 5 x 22 .....	2	
18	94101—06000	WASHER, plain 6 mm .....	2	
19	94111—06000	WASHER, spring 6 mm .....	2	
20	43450—099—680	REAR, brake cable .....	1	No stop switch

\* = Not available separately



Ref. No.	Part No.	Description	Qty	Remarks
1	32983—063—000	GROMMET, wire cord .....	2	
2	32100—099—600	HARNESS, wire .....	1	
3	30500—099—004	COIL IGNITION .....	1	
4	30700—063—681	CAP, ass'y noise suppressor .....	1	
5	87123—099—000	EMBLEM, frame .....	1	
6	87123—099—600	EMBLEM, frame R/H .....	1	GB
	87124—099—600	EMBLEM, frame L/H .....	1	GB
7	88120—099—000	BACK MIRROR, left compl. ....	1	Optional
	61130—099—600	NUMBER PLATE, front comp. ....	1	Complete set
8 *		NUMBER PLATE, front .....	1	
9 *		WASHER, number plate setting .....	2	
10 *		BRACKET, front, number plate .....	1	
11	84701—099—600	BRACKET A, number plate .....	1	
12	84702—099—600	BRACKET B, number plate .....	1	
13	38910—050—650	REFLECTOR, Ass'y .....	1	
14	90202—036—000	DISTANCE, Collar .....	1	
15	94101—05000	WASHER, plain 5 mm .....	1	
16	92000—06012	BOLT, hex. 6 x 12 .....	2	
17	93500—04012	SCREW, cross 4 x 12 .....	4	
18	935000—06012	SCREW, panhead 6 x 12 .....	3	
19	93500—06015	SCREW, panhead 6 x 15 .....	2	
20	94001—04000	NUT, hex. 4 mm .....	4	
21	94001—05000	NUT, hex. 5 mm .....	1	
22	94001—06000	NUT, hex. 6 mm .....	7	
23	94101—04000	WASHER, plain 4 mm .....	4	
24	94101—06000	WASHER, plain 6 mm .....	14	
25	94111—04000	WASHER, spring 4 mm .....	4	
26	94111—05000	WASHER, spring 5 mm .....	1	
27	94111—06000	WASHER, spring 6 mm .....	4	

\* = Not available separately.

# PART N° INDEX ENGINE PF50

Part N°	Page	Part N°	Page	Part N°	Page	Part N°	Page
<b>11000 Parts</b>		14771-081-000	9	23220-081-010	11	90461-081-000	11
11100-081-010	15	14791-081-000	9	23801-081-000	11	90469-081-000	11
11191-081-000	15	14920-081-020	5	<b>24000 Parts</b>			
11200-081-010	15	14935-081-010	5	24111-081-000	11	90478-700-000	5
11200-081-020	21	14945-081-010	5	24611-081-010	7	90511-216-670	9
11215-081-000	21	14950-099-000	27	24612-063-000	7	90607-081-000	5
11218-081-000	21	<b>15000 Parts</b>		24621-081-000	11	90719-081-000	13
11331-081-000	7	15331-035-000	21	<b>28000 Parts</b>			
11394-081-010	7	15332-035-000	21	28802-081-000	11	90741-044-000	13
11431-063-000	15	15381-081-000	21	28811-081-000	11	90921-044-000	7
<b>12000 Parts</b>		15382-081-000	21	28813-081-000	11	90471-044-000	21
12100-081-010	5	15650-040-000	7	28815-081-000	11	90488-044-000	21
12191-081-000	5	<b>16000 Parts</b>		28817-081-000	11	<b>91000 Parts</b>	
12200-081-000	5	16100-099-601	17	<b>30000 Parts</b>			
12210-081-000	5	16100-099-691	17	30202-063-004	15	91101-205-010	13
12251-081-000	5	16118-063-004	17	30205-044-004	15	91203-081-005	11
12301-081-000	5	16119-063-004	17	30207-063-004	15	91211-044-000	13
12301-081-060	21	16122-063-004	17	30208-063-004	15	91212-063-005	7
12391-081-000	5	16123-063-004	19	30209-063-004	15	91301-216-000	5
12391-081-040	21	16126-063-014	17	30541-063-004	15	91311-044-000	7
<b>13000 Parts</b>		16127-063-014	17	<b>31000 Parts</b>			
13000-081-010	13	16133-081-004	19	31100-063-601	15	<b>99000 Parts</b>	
13010-044-000	13	16133-081-690	19	31100-063-621	15	99114-063-0500	19
13020-044-000	13	16141-063-004	17	31100-099-620	15	99114-063-0520	19
13030-044-000	13	16151-063-004	17	31100-099-690	15	99114-063-0550	19
13040-044-000	13	16151-063-690	17	31121-081-601	15	99114-063-0580	19
13050-044-000	13	16156-044-004	17	31121-099-620	15	99114-063-0600	19
13101-081-000	13	16157-044-004	17	31121-063-621	15	99114-063-0620	19
13102-081-000	13	16162-044-004	17	31121-099-690	15	99114-063-0650	19
13103-081-000	13	16163-063-004	17	31631-081-601	15	99114-063-0680	19
13104-081-000	13	16164-225-004	17	<b>32000 Parts</b>			
13105-081-000	13	16171-044-004	17	32956-063-300	15		
13111-044-010	13	16173-063-004	17	32957-063-010	15		
13115-001-000	13	16176-551-004	17	<b>90000 Parts</b>			
13201-063-300	13	16181-001-004	17	90012-081-010	9		
13211-044-030	13	16181-250-004	17	90081-044-000	21		
13311-081-310	13	16185-044-004	17	90201-044-000	15		
13321-063-310	13	16189-056-040	17	90206-023-000	9		
13381-063-300	13	16194-063-004	17	90231-816-000	7		
<b>14000 Parts</b>		16196-063-014	17	90407-259-000	15		
14101-081-010	9	16197-063-004	17	90426-001-000	15		
14101-081-020	21	16199-063-004	17	90434-816-000	7		
14105-081-010	9	16265-081-000	5	90445-081-000	9		
14311-081-010	13	16267-081-000	5	90451-081-000	7-11		
14315-081-000	7	<b>22000 Parts</b>		90456-081-000	7		
14401-081-000	9	22100-081-000	7				
14411-081-000	9	22131-081-000	7				
14431-081-000	9	22201-044-050	7				
14451-081-000	9	22300-081-000	7				
14500-081-000	9	22802-044-000	7				
14711-081-000	9	<b>23000 Parts</b>					
14721-081-000	9	23110-081-020	7				
14731-081-000	9	23211-081-000	11				
14751-081-000	9						

# PART N° INDEX FRAME PF50

Part N°	Page	Part N°	Page	Part N°	Page
<b>14000 Parts</b>		33708-099-600	47	<b>44000 Parts</b>	
14950-099-000	27	33709-099-600	47	44001-093-000	31
<b>16000 Parts</b>		33712-099-000	43	44301-093-003	31
16950-099-159	35	<b>34000 Parts</b>		44302-093-003	31
<b>17000 Parts</b>		34901-001-812	47	44303-093-003	31
17200-063-030	33	34901-050-621	43	44311-093-000	31
17205-063-020	33	34901-063-690	43	44312-099-600	31
17225-063-020	33	34901-099-600	47	44600-099-000	31
17227-063-010	33	34906-093-000	43	44601-099-003	31
17251-044-010	33	<b>37000 Parts</b>		44610-093-000	31
17251-081-000	33	37200-093-000	43	44701-099-000	31
17253-063-010	33	37200-099-600	47	44711-044-154	31-39
17500-099-010	35	37202-099-000	43-47	44712-044-000	31-39
17620-093-000	35	<b>38000 Parts</b>		44713-044-000	31-39
17651-099-000	35	38100-099-600	25	44800-099-000	31
17910-099-000	27	38110-027-610	27	44807-093-000	31
<b>18000 Parts</b>		38700-050-620	27	44830-094-179	43
18291-044-020	35	38910-090-650	49	<b>45000 Parts</b>	
18300-081-020	35	<b>40000 Parts</b>		45100-093-003	31
18351-099-020	35	40220-093-000	33	45110-093-003	31
18400-081-020	35	40230-093-000	33	45120-093-003	31-39
18401-063-000	35	40235-093-000	33	45131-093-003	31-39
<b>30000 Parts</b>		40510-099-000	37	45133-093-003	31-39
30500-099-004	41-49	40530-099-690	37	45410-093-003	31-39
30700-063-681	41-49	40530-099-620	37	45450-093-000	27
<b>32000 Parts</b>		40531-099-003	37	<b>50000 Parts</b>	
32100-099-000	41	<b>41000 Parts</b>		50100-099-000	41
32100-099-600	41	41201-099-010	39	50301-093-003	25
32983-063-000	41-49	41201-099-620	39	50500-099-010	37
<b>33000 Parts</b>		41201-099-690	39	50522-099-010	37
33100-099-600	47	<b>42000 Parts</b>		50524-023-000	35
33100-099-159	43	42301-099-003	39	<b>51000 Parts</b>	
33121-099-159	43	42600-099-000	39	51002-099-000	29
33121-099-600	47	42601-099-003	39	51500-099-000	29
33122-099-159	43-47	42602-099-003	39	51500-099-010	29
33130-099-159	43	42603-099-003	39	51505-093-000	29
33130-099-600	47	42610-099-003	39	51510-099-000	29
33700-064-620	43	42620-099-003	39	51510-099-010	29
33700-099-600	47	42701-099-000	39	51516-093-000	27
33701-064-620	43	<b>43000 Parts</b>		51517-093-000	27
33701-064-690	43	43050-009-003	39	51518-093-000	29
33701-099-600	47	43100-099-003	39	51520-099-000	29
33702-064-620	43	43450-099-000	27	51520-099-010	29
33705-064-690	43	43450-099-680	47	51530-099-000	29
33705-099-600	47	<b>44000 Parts</b>		51530-099-010	29
33708-099-000	43	<b>45000 Parts</b>		51602-093-000	29



# PART N° INDEX FRAME PF50

Part N°	Page	Part N°	Page	Part N°	Page
<b>53000 Parts</b>		<b>81000 Parts</b>		90505-093-003	31
53001-093-003	27	81200-093-000	45	90505-099-003	39
53002-093-003	27	81200-099-890	45	90521-099-000	
53100-099-000	27	81201-099-890	45	90522-099-000	39
53111-093-000	27	81221-044-811	45	90548-099-000	47
53112-093-000	27	81222-044-810	45	90609-031-000	33
53141-093-003	27			90709-031-000	33
53152-093-003	27	<b>83000 Parts</b>		<b>91000 Parts</b>	
53165-093-003	27			91406-099-000	27
53173-093-003	27	83513-044-000	37	91407-099-000	27
53175-093-003	27	83517-063-000	37		
53178-093-003	27	83541-099-000	37	<b>97000 Parts</b>	
53181-093-003	27	83600-099-020	33	97000-11000	31
53211-093-003	25	83601-099-300	33	97463-11214	31
53212-093-003	25	83602-099-300	33	97524-21220	39
53213-093-003	25	<b>84000 Parts</b>			
53230-093-000	27				
53600-044-000	25	84208-099-690	35		
<b>61000 Parts</b>		84701-099-010	35		
61100-099-000	25	84701-099-600	49		
61130-099-600	49	84702-099-600	49		
61301-099-159	43	<b>87000 Parts</b>			
61402-099-600	47				
<b>63000 Parts</b>		87121-099-000	41		
63101-099-600	47	87122-099-000	41		
<b>77000 Parts</b>		87123-099-000	49		
77011-044-010	37	87123-099-600	49		
77123-044-300	37	87124-099-600	49		
77125-044-300	37	87200-099-600	47		
77127-044-020	37	87900-049-000	25		
77131-044-000	37	87900-044-690	45		
77133-044-020	37	<b>88000 Parts</b>			
77135-044-000	37	88120-099-000	49		
<b>80000 Parts</b>		<b>89000 Parts</b>			
80100-099-000	37	89101-063-000	37		
80100-099-690	37	<b>90000 Parts</b>			
80100-099-620	37				
80100-099-600	37	90111-093-000	37		
80111-099-000	37	90114-093-003	27		
80112-099-000	37	90122-093-003	31-39		
80113-099-000	37	90131-093-000	43		
		90202-036-000	49		
		90202-093-000	37		
		90300-093-000	37		
		90301-093-003	25		
		90302-093-000	25		
		90312-093-003	31		
		90313-093-003	31		
		90314-093-003	31		
		90315-099-003	39		
		90502-099-000	33-37		

# PF 50 COLOUR CHART

Parts name	COLOUR						ENGLAND (GB)					
	Beaver Brown L	Scarlet Red C	English Green EG	Yvory White XL	Metallic Silver MS	Black B	Oxford Blue OB	Cambridge Blue CB	Bright Yellow XB	Sky Blue XE		
FRAME BODY	X	X	X	—	—	X	X	—	X	X		
FUEL TANK	X	X	X	—	—	X	X	—	X	X		
FRONT FORK	X	X	X	—	—	X	X	—	X	X		
CHAIN CASE	X	X	X	—	—	X	—	X	X	X		
MAINSTAND	X	X	X	—	—	X	X		X	X		
HEADLIGHT CASE	—	—	—	X	—	—	—	—	—	—		
FRONT FENDER	—	—	—	X	—	—	—	X	—	—		
REAR FENDER	—	—	—	X	—	—	—	X	—	—		
ENGINE COVER	—	—	—	X	—	—	—	X	—	—		
PLATE TAILLIGHT	—	—	—	X	—	X	—	—	—	—		
MUFFLER HANGER	—	—	—	—	—	X	—	—	—	—		
BRIDGE FORK TOP	—	—	—	—	X	—	—	—	—	—		
NUMBER PLATE	—	—	—	—	—	X	—	—	—	—		